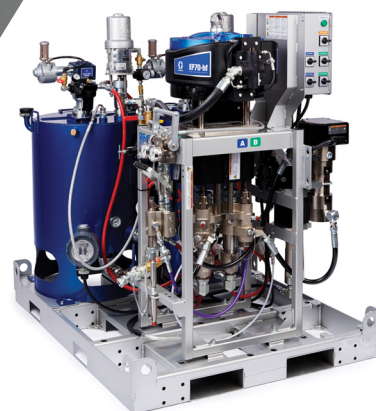




PLURAL COMPONENT SPRAYERS

For Protective Coatings Applications



PROVEN QUALITY. LEADING TECHNOLOGY.



THE INDUSTRY LEADER FOR OVER 60 YEARS

Whether it's a large coating project like a bridge, ship or tank, you depend on your spray equipment to deliver a flawless performance every time. Graco offers a complete lineup of the industry's most dependable plural-component sprayers — in the exact size you need to accomplish any airless spray project.

TRUST YOUR BUSINESS AND REPUTATION TO GRACO

Graco is committed to providing the highest quality protective coating airless sprayers available, backed by the industry's best warranty.

AMERICAN BUILT QUALITY SINCE 1926

100% factory-tested and field-proven Graco professional sprayers are manufactured, assembled and supported in the USA.

INDUSTRY-LEADING WARRANTY

Behind every Graco sprayer is the industry's strongest warranty. You may never use Graco's warranty— but if you do, we will be there.



GRACO EXCLUSIVE TECHNOLOGY THAT KEEPS YOU SPRAYING



PATENTED

THE LONGEST LASTING PUMPS EVER BUILT

- Xtreme pumps offer Longest life in the industry with available MaxLife® piston rod and cylinder
- Up to 6X longer life
- Long-life ceramic balls for maximum versatility no matter what you're spraying (Optional Kit)



PATENTED

LEGENDARY PERFORMANCE

- XL Air Motors provide a faster, more responsive changeover
- Thermally isolated external pilot lines minimize icing
- Little to no pulsation or pattern fluctuation, even with multiple guns



PATENTED

LESS DOWNTIME FOR MORE PRODUCTIVITY

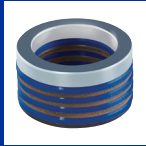
- Endurance™ Pump Lowers — quick and easy “on-the-job” pump removal and maintenance
- QuikAccess™ intake valve for easy access to lower ball check



GRACO EXCLUSIVE

DIGITAL MONITORING

- Quickly monitor pump cycles and gallons sprayed
- Automatic runaway protection
- Customizable maintenance reminders



PATENT PENDING

MATERIAL COMPATIBILITY

- Optional packing materials for the best pump performance — spray high solids, heated material, or solvent based coatings with confidence!
- UHMWPE and PTFE
- PTFE



GRACO EXCLUSIVE

PLUG IN PERFORMANCE

- Electric driven pumps up to 5000 psi
- Eliminates the need for an air compressor



THE RIGHT SPRAYER FOR EVERY JOB

NO MATTER THE JOB, GRACO HAS A PROPORTIONER FOR YOU — YOU CHOOSE!

With the widest selection of plural component sprayers to choose from and a host of performance enhancing accessories, there is a Graco plural component proportioner to help you complete your projects — no matter how large or which coating.

Discover the benefits of Graco's line of sprayers when you switch from hand-mixing to a plural component machine.



Reduce waste and material costs

With Graco sprayers, you reduce waste and save money because you only mix as much material as you need. No more throwing away unused material at the end of the day. No more residue left over in smaller pails or cans. You can buy material in bulk as well.



Less clean-up saves time and money

Only the parts that come in contact with mixed material must be cleaned during the job. Instead of flushing out an entire pump system that contains mixed material, you only need to flush the static mix tube and hose to the gun. Reduced cleaning time means you save labor costs and increase uptime.



Provides consistent material quality

No more guesswork or human error in measuring means you can improve throughput, cut back on material waste and reduce rework. Materials are proportioned by precision positive displacement pumps and mixed accurately and on-ratio at the mix manifold.



MODEL	E-MIX XT	XP	XP-HF	XPS-HF	XM
RATIO TYPE	Variable	Fixed	Fixed	Fixed	Variable
MIX RATIO	1:1 – 6:1	Available in ratios of 1:1 – 4:1	Available in ratios of 1:1 – 4:1	Available in ratios of 1:1 – 4:1	1:1 – 10:1
AIR REQUIRED	No	Yes	Yes	Yes	Yes
SUPPLY POWER	230V	230V	230V	230V and 480V	230V and 480V
PORTABILITY	★★★★★	★★★	★★★	★★	★★
OUTPUT	★★★	★★★★	★★★★★	★★★★★	★★★★
RANGE OF MODELS	★★	★★★★	★★★★	★★★★★	★★★



INCREASE PROFIT & QUALITY WITH *E-MIX XT!*

Introducing the industry's most economical, easy-to-operate and portable electric variable ratio spray system! Designed to handle spray ratios from 1:1 up to 6:1, it is also fully capable with coatings up to 100% solids content — making it an ideal solution for nearly every job!

ELECTRIC POWERED, NO AIR COMPRESSOR NEEDED
less hassle and expense — save \$1000's per week!

EASY TOUCHSCREEN OPERATION
set ratio, pressure, heater temperatures and spray!

QUIET OPERATION allows extended
spray times in noise-sensitive areas

**OFFERS SUBSTANTIAL SOLVENT
AND COATING SAVINGS**
compared to “hot-potting”



WHAT CONTRACTORS ARE SAYING...

“On our very first job, we saw at least a **15% savings** on materials (coatings and solvent) compared to hot potting...In fact, we plan on phasing out our Kings and moving the rest of the crews to E-Mix XT”


- Manuel Rodriguez, Co-owner, Polytech Industrial Inc, Fresno, CA



THE EASIEST-TO-OPERATE VARIABLE-RATIO SPRAYER IN THE INDUSTRY SO EASY, YOU CAN RUN IT FROM A **SINGLE TOUCHSCREEN!**

SAVE TIME AND MONEY WITH GRACO'S XT MOTOR TECHNOLOGY

Bypass the usage of expensive and inefficient diesel compressors and realize immediate cost savings with Graco's XT Electric Motors. Whether it's compressor rental, acquisition or maintenance costs, choose a cleaner, less expensive method to keep your business moving — XT Electric.

DIESEL COMPRESSOR SIZE	GALLONS OF DIESEL FUEL PER 8 HOUR SHIFT		
		DIESEL FUEL SAVINGS USING SHORE POWER*	DIESEL FUEL SAVINGS USING A GENERATOR*
375 CFM	48	\$216	\$184
750 CFM	104	\$468	\$398
1170 CFM	168	\$756	\$643

*Based on typical air compressors in market. Actual may vary by brand and model. Diesel Fuel based on \$4.50 a gallon at pump. Delivered fuel would deliver additional savings.



SOLUTIONS FOR EVERY JOB!

ELECTRIC POWERED!
ELIMINATE THE COMPRESSOR AND SAVE MONEY

E-MIX XT

ADJUSTABLE RATIOS FROM 1:1 TO 6:1 PLURAL COMPONENT SPRAYING MADE EASIER — WITH ONE MACHINE

Introducing the industry's most economical, easy-to-operate and portable electric variable ratio spray system! Designed to handle spray ratios from 1:1 up to 6:1, it is also fully capable with coatings up to 100% solids content — making it an ideal solution for nearly every job!

XT BREAKTHROUGH PERFORMANCE

- Variable ratio from 1:1 to 6:1
- Flow rates up to 1.5 gpm
- 5000 psi max pressure

XTREME TORQUE™ MOTORS

- Low RPM, high torque design offers long life and unmatched performance
- Silent operation for comfort and extending spray times in restricted areas
- Made in the USA by Graco

DUAL ENDURANCE® PUMP WITH PROCONNECT®

- Job site proven Chromex Rod and Chrome Cylinder for exceptional life and durability
- Balanced double-displacement design for ratio accuracy
- Quick and easy pump removal with just a hammer — perfect for on-the-job maintenance

DUALFLO® ON-DEMAND FLUID HEATER

- Offers independent heat for A and B components
- 4000 watt power provides up to 60°F delta T heat rise for easier spraying
- Adjusts right from the touch screen

EASY-TO-MANEUVER DESIGN

- Heavy-duty painted steel construction with integrated lift points and flat proof tires

FEATURING RATIOGUARD PROTECTION

- Real-time ratio monitoring maintains accuracy
- Integrated alarm system prevents errors and eliminates rework

INTEGRATED RATIO CHECK

- Proved on-ratio accuracy for each mix — ensuring quality
- Ideal for inspections and quality control checks
- Single-handle design for easy, efficient operations

FASTCLEAN™ SOLVENT PUMP

- Allows quick flushing of mix hose and gun during stoppage to protect your equipment
- Features 5 gallon inlet suction set for solvent bucket
- Powered by Xtreme Torque Motor and Endurance pump for long life and trouble-free operation

SMARTSYNC™ CONTROL WITH TOUCH-SCREEN INTERFACE

- All important spray parameters are controlled from one screen — nothing could be easier
- Eliminates the steep learning curve — no expert needed
- Perfectly syncs the XT motors and pumps to deliver the perfect ratio — every time



STAND ALONE HEATED HOSE

- Easily adjust hose temp at the push of a button
- Available in 50 ft or 100 ft lengths in 1/2 in x 1/2 in or 1/2 in x 3/8 in
- Can heat material up to an additional 40 degrees F!
- Fits all models of E-Mix XT



AVAILABLE ACCESSORY

SCAN FOR MORE INFORMATION
[GRACO.COM/EMIX](https://graco.com/emix)



ENDURANCE LOWERS FOR QUICK AND EASY “ON-THE-JOB” PUMP REMOVAL AND MAINTENANCE — NOTHING IS FASTER!



PROVEN DESIGN AND PERFORMANCE

- Chromex™ Rod and Stainless Steel cylinder for maximum life and performance
- UHMWPE and PTFE packings for ultimate durability with most materials
- QuikAccess™ intake valve for easy access to lower ball check



REMOVE THE PUMP IN 3 EASY STEPS



1. Loosen jam nut



2. Open door and remove pump



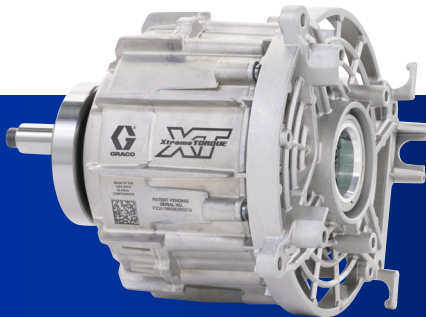
3. Remove hose and slide pump out



XTREME TORQUE MOTOR

PATENT PENDING

- Experience a new level of performance with the first motor ever designed specifically for airless spray
- Sound of quality. The first motor ever designed specifically for airless spray
- Rapid-Response™ Control delivers the world's steadiest running pressure with dial-in 10 psi increments.



E-MIX XT

PLURAL COMPONENT SPRAYER

READY-TO-SPRAY SOLUTIONS FOR EVERY JOB!

Choose from Standard Series for work where a remote manifold is not required, or choose the Pro Series for longer hose runs with a remote manifold — you decide!



E-MIX XT STANDARD INCLUDES:

- E-Mix XT (240v 40a Single Phase)
- Dual 7 Gallon Hoppers
- FastClean Solvent Flush Pump
- DualFlo Heater
- Ratio Check Kit
- 25 ft x 3/8 in Mix Integration Hose
- 10 ft x 1/4 in Whip Hose
- XTR 5+ Gun, XHD 519 Switch Tip



E-MIX XT PRO INCLUDES:

- All the **STANDARD** Features
- PLUS:**
- Light Tower
 - Hose Rack
 - Remote Manifold Carriage
 - 200 ft x 1/2 in (4 x 50 ft) “A” and “B” Material Hose
 - 100 ft x 3/8 in (2 x 50 ft) “B” Material Hose (ratios over 3:1)

E-MIX XT PACKAGES

DESCRIPTION	PART #	INCLUDES
E-Mix XT Standard	2004087	DualFlo Heaters, Fast Clean Flush Pump, Ratio Check, SmartSync Display
E-Mix XT Pro	2005565	All Standard Package features, PLUS Light Tower, Hose Rack, 100 ft of Remote Mix hoses, Remote Mix Manifold Carriage

All packages include XTR+ Gun, 35 ft integration hose and static mixers.

BUILD IT THE WAY YOU NEED IT, WITH THESE GREAT ACCESSORIES!

ACCESSORIES		PART #
1	Light Tower (included on E-Mix XT Pro)	18H278
2	Hose Rack (included on E-Mix XT Pro)	2006329
3	1/2 in x 1/2 in x 50 ft Complete Heated Hose Kit	2007169
	1/2 in x 1/2 in x 100 ft Complete Heated Hose Kit	2007171
	1/2 in x 3/8 in x 50 ft Complete Heated Hose Kit	2007173
	1/2 in x 3/8 in x 100 ft Complete Heated Hose Kit	2007175
4	Heated Hose Controller	2006697



DITCH THE COMPRESSOR FROM DRUM TO GUN!

ACCESSORIES	PART #
EFP-350XT Bare	2009958
EFP-350XT Complete with Y-Strainer	2009960



SCAN FOR MORE INFORMATION

graco.com/EFP



XP

THE FIXED-RATIO, TWO COMPONENT PROPORTIONING SOLUTION!

Whether you are spraying a high-solids polyurethane or a 100% solids epoxy, Graco has you covered with the XP Family of sprayers. Offering the benefit of mixing only the amount of material the job requires, it saves on material costs — as well as the cost and time of cleanup. Get the job done faster, and with less cost so you can make more profit.

EXCLUSIVE XTREME PUMP LOWERS

- Proven performance you can count on
- Multiple sizes available to provide various fixed mix ratios
- Easily change one or both lowers to get desired mix ratio
- Heavy-duty piston rods for long life

XL6500 10 INCH AIR MOTOR

- The proven air motor that is designed to keep you spraying and eliminate icing
- Heavy-duty aluminum, steel and composite construction for years of service
- De-ice valve keeps system ice-free during heavy icing conditions

OUTLET MANIFOLD AND VALVES

- Included fluid gauges allow for monitoring pump output
- Provides automatic overpressure relief
- Allows circulation back to the supply for pump priming, purging or relieving outlet pressure
- Allows fluid warm-up circulation with integrated heaters

MIX MANIFOLD

- Provides simple fluid control for mixing or flushing
- Easily handles high-solids coatings with oversized porting and less pressure drop
- Position on unit, or remotely for ultimate convenience

RATIO ASSURANCE

- Available accessory for both Hazardous and Non-Hazardous location models
- Monitors A and B differential pressure to assure your on ratio — every time

VISCON® HP PRIMARY HEATERS

- Reduces coating viscosity and improves spray pattern
- Easy to adjust temperature controls with built in thermostat and temperature gauge

RATIO CHECK KIT ACCESSORY

- Easily take material samples to verify on ratio performance
- Designed to easily mounted to all styles of XP proportioners, regardless of size or configuration



Part number: 2000308

OPTIONAL ACCESSORY



NON-HAZARDOUS LOCATION

DESCRIPTION	PART #	INCLUDES
XP50 1:1 Heated	575105	Junction Box, Viscon HP Heaters
XP50 1:1 Water Jacketed Hose	575107	Junction Box, Viscon HP Heaters, Hose Heat Circulation Kit, Remote Carriage, PressureTrak
XP50 2:1 Heated	575205	Junction Box, Viscon HP Heaters
XP50 2:1 Water Jacketed Hose	575207	Junction Box, Viscon HP Heaters, Hose Heat Circulation Kit, Remote Carriage, PressureTrak
XP50 3:1 Heated	575305	Junction Box, Viscon HP Heaters
XP50 3:1 Water Jacketed Hose	575307	Junction Box, Viscon HP Heaters, Hose Heat Circulation Kit, Remote Carriage, PressureTrak
XP50 4:1 Heated	575405	Junction Box, Viscon HP Heaters
XP50 4:1 Water Jacketed Hose	575407	Junction Box, Viscon HP Heaters, Hose Heat Circulation Kit, Remote Carriage, PressureTrak
XP70 1:1 Heated	576105	Junction Box, Viscon HP Heaters
XP70 1:1 Water Jacketed Hose	576107	Junction Box, Viscon HP Heaters, Hose Heat Circulation Kit, Remote Carriage, PressureTrak
XP70 2:1 Heated	576205	Junction Box, Viscon HP Heaters,
XP70 2:1 Water Jacketed Hose	576207	Junction Box, Viscon HP Heaters, Hose Heat Circulation Kit, Remote Carriage, PressureTrak
XP70 3:1 Heated	576305	Junction Box, Viscon HP Heaters
XP70 3:1 Water Jacketed Hose	576307	Junction Box, Viscon HP Heaters, Hose Heat Circulation Kit, Remote Carriage, PressureTrak
XP70 4:1 Heated	576405	Junction Box, Viscon HP Heaters
XP70 4:1 Water Jacketed Hose	576407	Junction Box, Viscon HP Heaters, Hose Heat Circulation Kit, Remote Carriage, PressureTrak

All packages include 7 Gallon Hoppers, Merkur Solvent Flush Pump, XTR+ Gun, 35 ft integration hose and static mixers. Power junction box designed for 240V single or three phase supply power. Heated hoses must be ordered separately in desired sizes and lengths.

HAZARDOUS LOCATION PACKAGES

DESCRIPTION	PART #	INCLUDES
XP50 1:1 Non Heated	282102	Junction Box, Viscon HF Heaters
XP50 1:1 Heated	282104	Merkur Flush Pump, Viscon HP Heaters
XP50 1:1 Water Jacketed Hose	575106	Merkur Flush Pump, Viscon HP Heaters, Hose Heat Circulation Kit, Remote Carriage, PressureTrak
XP50 2:1 Non Heated	282202	
XP50 2:1 Heated	282204	Merkur Flush Pump, Viscon HP Heaters
XP50 2:1 Water Jacketed Hose	575206	Merkur Flush Pump, Viscon HP Heaters, Hose Heat Circulation Kit, Remote Carriage, PressureTrak
XP50 3:1 Non Heated	282302	
XP50 3:1 Heated	282304	Merkur Flush Pump, Viscon HP Heaters
XP50 3:1 Water Jacketed Hose	575306	Merkur Flush Pump, Viscon HP Heaters, Hose Heat Circulation Kit, Remote Carriage, PressureTrak
XP50 4:1 Non Heated	282402	
XP50 4:1 Heated	282404	Merkur Flush Pump, Viscon HP Heaters
XP50 4:1 Water Jacketed Hose	575406	Merkur Flush Pump, Viscon HP Heaters, Hose Heat Circulation Kit, Remote Carriage, PressureTrak
XP70 1:1 Non Heated	571102	
XP70 1:1 Heated	571104	Merkur Flush Pump, Viscon HP Heaters
XP70 1:1 Water Jacketed Hose	576106	Merkur Flush Pump, Viscon HP Heaters, Hose Heat Circulation Kit, Remote Carriage, PressureTrak
XP70 2:1 Non Heated	571202	
XP70 2:1 Heated	571204	Merkur Flush Pump, Viscon HP Heaters
XP70 2:1 Water Jacketed Hose	576206	Merkur Flush Pump, Viscon HP Heaters, Hose Heat Circulation Kit, Remote Carriage, PressureTrak
XP70 3:1 Non Heated	571302	
XP70 3:1 Heated	571304	Merkur Flush Pump, Viscon HP Heaters
XP70 3:1 Water Jacketed Hose	576306	Merkur Flush Pump, Viscon HP Heaters, Hose Heat Circulation Kit, Remote Carriage, PressureTrak
XP70 4:1 Non Heated	571402	
XP70 4:1 Heated	571404	Merkur Flush Pump, Viscon HP Heaters
XP70 4:1 Water Jacketed Hose	576406	Merkur Flush Pump, Viscon HP Heaters, Hose Heat Circulation Kit, Remote Carriage, PressureTrak

All packages include 7 Gallon Hoppers, XTR+ Gun, 35 ft integration hose and static mixers. Designed for 240V supply power. Heated hoses must be ordered separately in desired sizes and lengths.

XP-HF

HIGH OUTPUT FIXED RATIO PROPORTIONING FOR THE LARGEST JOBS

With the powerful XL 10000 air motor, the XP-HF delivers 60% more flow than the standard XP sprayer. This give your crew the ability to use larger tips or run multiple guns, getting the job done faster. Available in 5000psi and 7250psi models with mix ratios of 1:1, 2:1, 3:1 or 4:1*

*Additional ratios available possible by changing displacement pump sizes. Please see your distributor for all possible ratios.

EXCLUSIVE XTREME PUMP LOWERS

- Proven performance you can count on
- Multiple sizes available to provide various fixed mix ratios
- Easily change one or both lowers to get desired mix ratio
- Heavy-duty piston rods for long life

XL10000 13 INCH AIR MOTOR

- The proven air motor that is designed to keep you spraying and eliminate icing
- Heavy-duty aluminum, steel and composite construction for years of service
- De-ice valve keeps system ice-free during heavy icing conditions

VISCON® HF PRIMARY HEATERS

- Reduces coating viscosity and improves spray pattern
- Fully accessible heater core with serviceable heating elements.

MIX MANIFOLD

- Provides simple fluid control for mixing or flushing
- Easily handles high-solids coatings with oversized porting and less pressure drop
- Position on unit, or remotely for ultimate convenience

RATIO ASSURANCE

- Available accessory for both Hazardous and Non-Hazardous location models
- Monitors A and B differential pressure to assure your on ratio — every time

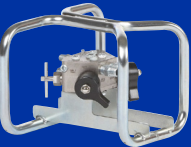
OUTLET MANIFOLD AND VALVES

- Included fluid gauges allow for monitoring pump output
- Provides automatic overpressure relief
- Allows circulation back to the supply forepump priming, purging or relieving outlet pressure
- Allows fluid warm-up circulation with integrated heaters



REMOTE GUN SPLITTER

- Supports up to 2 Guns with independent flush valves, with an additional 3rd gun port
- Allows for one sprayer to continue working while flushing out the other gun and hose.



Part number:
262826

AVAILABLE ACCESSORY

NON-HAZARDOUS LOCATION

DESCRIPTION	PART #	INCLUDES
XP50-hf 1:1 Heated	573105	Junction Box, Viscon HF Heaters
XP50-hf 1:1 Water Jacketed Hose	573107	Junction Box, Viscon HF Heaters, Hose Heat Circulation Kit, Remote Carriage, PressureTrak
XP50-hf 2:1 Heated	573205	Junction Box, Viscon HF Heaters
XP50-hf 2:1 Water Jacketed Hose	573207	Junction Box, Viscon HF Heaters, Hose Heat Circulation Kit, Remote Carriage, PressureTrak
XP50-hf 3:1 Heated	573305	Junction Box, Viscon HF Heaters
XP50-hf 3:1 Water Jacketed Hose	573307	Junction Box, Viscon HF Heaters, Hose Heat Circulation Kit, Remote Carriage, PressureTrak
XP50-hf 4:1 Heated	573405	Junction Box, Viscon HF Heaters
XP50-hf 4:1 Water Jacketed Hose	573407	Junction Box, Viscon HF Heaters, Hose Heat Circulation Kit, Remote Carriage, PressureTrak
XP70-hf 1:1 Heated	572105	Junction Box, Viscon HF Heaters
XP70-hf 1:1 Water Jacketed Hose	572107	Junction Box, Viscon HF Heaters, Hose Heat Circulation Kit, Remote Carriage, PressureTrak
XP70-hf 2:1 Heated	572205	Junction Box, Viscon HF Heaters,
XP70-hf 2:1 Water Jacketed Hose	572207	Junction Box, Viscon HF Heaters, Hose Heat Circulation Kit, Remote Carriage, PressureTrak
XP70-hf 3:1 Heated	572305	Junction Box, Viscon HF Heaters
XP70-hf 3:1 Water Jacketed Hose	572307	Junction Box, Viscon HF Heaters, Hose Heat Circulation Kit, Remote Carriage, PressureTrak
XP70-hf 4:1 Heated	572405	Junction Box, Viscon HF Heaters
XP70-hf 4:1 Water Jacketed Hose	572407	Junction Box, Viscon HF Heaters, Hose Heat Circulation Kit, Remote Carriage, PressureTrak

All packages include 7 Gallon Hoppers, Merkur Solvent Flush Pump, XTR+ Gun, 35 ft integration hose and static mixers. Power junction box designed for 240V single or three phase supply power. Heated hoses must be ordered separately in desired sizes and lengths.

HAZARDOUS LOCATION PACKAGES

DESCRIPTION	PART #	INCLUDES
XP50-hf 1:1 Non Heated	573102	
XP50-hf 1:1 Heated	573104	Merkur Flush Pump, Viscon HF Heaters
XP50-hf 1:1 Water Jacketed Hose	573106	Merkur Flush Pump, Viscon HF Heaters, Hose Heat Circulation Kit, Remote Carriage, PressureTrak
XP50-hf 2:1 Non Heated	573202	
XP50-hf 2:1 Heated	573204	Merkur Flush Pump, Viscon HF Heaters
XP50-hf 2:1 Water Jacketed Hose	573206	Merkur Flush Pump, Viscon HF Heaters, Hose Heat Circulation Kit, Remote Carriage, PressureTrak
XP50-hf 3:1 Non Heated	573302	
XP50-hf 3:1 Heated	573304	Merkur Flush Pump, Viscon HF Heaters
XP50-hf 3:1 Water Jacketed Hose	573306	Merkur Flush Pump, Viscon HF Heaters, Hose Heat Circulation Kit, Remote Carriage, PressureTrak
XP50-hf 4:1 Non Heated	573402	
XP50-hf 4:1 Heated	573404	Merkur Flush Pump, Viscon HF Heaters
XP50-hf 4:1 Water Jacketed Hose	573406	Merkur Flush Pump, Viscon HF Heaters, Hose Heat Circulation Kit, Remote Carriage, PressureTrak
XP70-hf 1:1 Non Heated	572102	
XP70-hf 1:1 Heated	572104	Merkur Flush Pump, Viscon HF Heaters
XP70-hf 1:1 Water Jacketed Hose	572106	Merkur Flush Pump, Viscon HF Heaters, Hose Heat Circulation Kit, Remote Carriage, PressureTrak
XP70-hf 2:1 Non Heated	572202	
XP70-hf 2:1 Heated	572204	Merkur Flush Pump, Viscon HF Heaters
XP70-hf 2:1 Water Jacketed Hose	572206	Merkur Flush Pump, Viscon HF Heaters, Hose Heat Circulation Kit, Remote Carriage, PressureTrak
XP70-hf 3:1 Non Heated	572302	
XP70-hf 3:1 Heated	572304	Merkur Flush Pump, Viscon HF Heaters
XP70-hf 3:1 Water Jacketed Hose	572306	Merkur Flush Pump, Viscon HF Heaters, Hose Heat Circulation Kit, Remote Carriage, PressureTrak
XP70-hf 4:1 Non Heated	572402	
XP70-hf 4:1 Heated	572404	Merkur Flush Pump, Viscon HF Heaters
XP70-hf 4:1 Water Jacketed Hose	572406	Merkur Flush Pump, Viscon HF Heaters, Hose Heat Circulation Kit, Remote Carriage, PressureTrak

All packages include 7 Gallon Hoppers, XTR+ Gun, 35 ft integration hose and static mixers. Designed for 240V supply power. Heated hoses must be ordered separately in desired sizes and lengths.

XPS-HF

THE HIGHEST VOLUME OUTPUT FIXED-RATIO TURN KEY SOLUTION!

The Graco XPs-hf skid-based system is an all-in-one solutions that combines the XP-hf Sprayer with improved material conditioning. The XPs-hf helps reduce waste, speed up cure times and improve mix ratio. With the durable, agitated heated tanks, your coatings will obtain the best conditioning to meet the highest demand applications – making you more productive. Available in 5000psi and 7250psi models with mix ratios of 1:1, 2:1, 3:1 or 4:1*

*Additional ratios available possible by changing displacement pump sizes. Please see your distributor for all possible ratios.

EXCLUSIVE XTREME PUMP LOWERS

- Proven performance you can count on
- Multiple sizes available to provide various fixed mix ratios
- Easily change one or both lowers to get desired mix ratio
- Heavy-duty piston rods for long life

XL10000 13 INCH AIR MOTOR

- The proven air motor that is designed to keep you spraying and eliminate icing
- Heavy-duty aluminum, steel and composite construction for years of service
- De-ice valve keeps system ice-free during heavy icing conditions

VISCON HF PRIMARY HEATERS

- Reduces coating viscosity and improves spray pattern
- Fully accessible heater core with Serviceable heating elements.
- Easy to service

MIX MANIFOLD

- Provides simple fluid control for mixing or flushing
- Easily handles high-solids coatings with oversized porting and less pressure drop
- Position on unit, or remotely for ultimate convenience

RATIO ASSURANCE

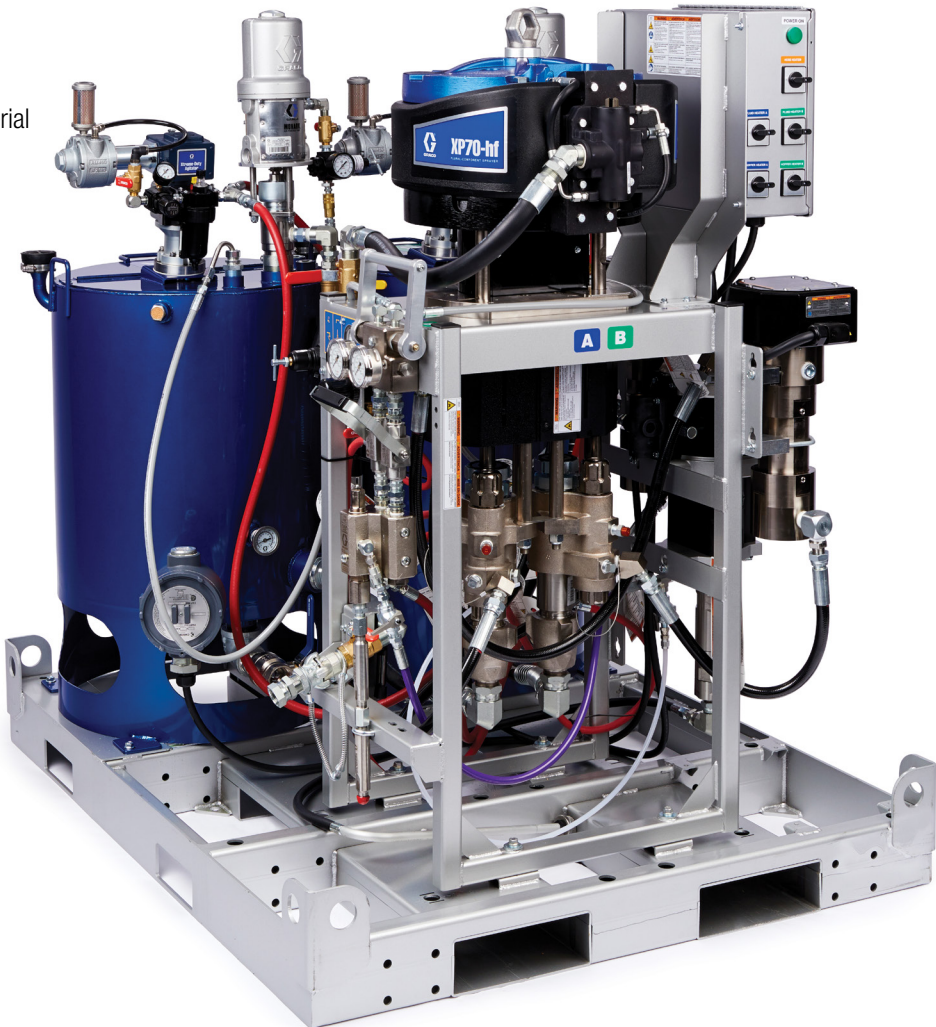
- Available accessory for both Hazardous and Non-Hazardous location models
- Monitors A and B differential pressure to assure your on ratio — every time

25 GAL SST-LINED HEATED HOPPERS

- Double-walled construction with 3000w heaters to condition material
- Xtreme-Duty agitators easily mixes high viscosity coatings
- 5:1 Monark® Feed pumps easily transport materials from hopper to pumps

OUTLET MANIFOLD AND VALVES

- Included fluid gauges allow for monitoring pump output
- Provides automatic overpressure relief
- Allows circulation back to the supply forepump priming, purging or relieving outlet pressure
- Allows fluid warm-up circulation with integrated heaters



XP PRESSURE MONITOR

- Monitors A and B differential pressure to assure you're on ratio — every time!
- Available in 120-240v or air turbine power
- Fits all models of XP sprayers



Part number 26C008 shown

AVAILABLE ACCESSORY

NON-HAZARDOUS LOCATION

DESCRIPTION	PART #	INCLUDES
XP50s-hf 1:1 Electric Heated Hose	578103	XTR5+ Gun, 35 ft Integration Hose, Electric Heated Hose Controller, Ratio Check Kit
XP50s-hf 1:1 Water Jacketed Hose	578101	XTR5+ Gun, 35 ft Integration Hose, Heated Hose Controller, Ratio Check Kit
XP50s-hf 2:1 Electric Heated Hose	578203	XTR5+ Gun, 35 ft Integration Hose, Electric Heated Hose Controller, Ratio Check Kit
XP50s-hf 2:1 Water Jacketed Hose	578201	XTR5+ Gun, 35 ft Integration Hose, Heated Hose Controller, Ratio Check Kit
XP50s-hf 3:1 Electric Heated Hose	578303	XTR5+ Gun, 35 ft Integration Hose, Electric Heated Hose Controller, Ratio Check Kit
XP50s-hf 3:1 Water Jacketed Hose	578301	XTR5+ Gun, 35 ft Integration Hose, Heated Hose Controller, Ratio Check Kit
XP50s-hf 4:1 Electric Heated Hose	578403	XTR5+ Gun, 35 ft Integration Hose, Electric Heated Hose Controller, Ratio Check Kit
XP50s-hf 4:1 Water Jacketed Hose	578401	XTR5+ Gun, 35 ft Integration Hose, Heated Hose Controller, Ratio Check Kit
XP70s-hf 1:1 Electric Heated Hose	577103	XTR5+ Gun, 35 ft Integration Hose, Electric Heated Hose Controller, Ratio Check Kit
XP70s-hf 1:1 Water Jacketed Hose	577101	XTR5+ Gun, 35 ft Integration Hose, Heated Hose Controller, Ratio Check Kit
XP70s-hf 2:1 Electric Heated Hose	577203	XTR5+ Gun, 35 ft Integration Hose, Electric Heated Hose Controller, Ratio Check Kit
XP70s-hf 2:1 Water Jacketed Hose	577201	XTR5+ Gun, 35 ft Integration Hose, Heated Hose Controller, Ratio Check Kit
XP70s-hf 3:1 Electric Heated Hose	577303	XTR5+ Gun, 35 ft Integration Hose, Electric Heated Hose Controller, Ratio Check Kit
XP70s-hf 3:1 Water Jacketed Hose	577301	XTR5+ Gun, 35 ft Integration Hose, Heated Hose Controller, Ratio Check Kit
XP70s-hf 4:1 Electric Heated Hose	577403	XTR5+ Gun, 35 ft Integration Hose, Electric Heated Hose Controller, Ratio Check Kit
XP70s-hf 4:1 Water Jacketed Hose	577401	XTR5+ Gun, 35 ft Integration Hose, Heated Hose Controller, Ratio Check Kit

All packages include Merkur Solvent Flush Pump, Remote Manifold Carriage, XTR+ Gun, 35 ft integration hose and static mixers. 480V packages available. See page 29 for additional models.

HAZARDOUS LOCATION COMPONENTS

DESCRIPTION	PART #	INCLUDES
XP50s-hf 1:1 Electric Heated Hose	578113	XTR 5+ Gun, 35 ft Integration Hose, Electric Heated Hose Controller, Ratio Check Kit
XP50s-hf 1:1 Water Jacketed Hose	578111	XTR 5+ Gun, 35 ft Integration Hose, Heated Hose Circulation Kit, Ratio Check Kit
XP50s-hf 2:1 Electric Heated Hose	578213	XTR 5+ Gun, 35 ft Integration Hose, Electric Heated Hose Controller, Ratio Check Kit
XP50s-hf 2:1 Water Jacketed Hose	578211	XTR 5+ Gun, 35 ft Integration Hose, Heated Hose Circulation Kit, Ratio Check Kit
XP50s-hf 3:1 Electric Heated Hose	578313	XTR 5+ Gun, 35 ft Integration Hose, Electric Heated Hose Controller, Ratio Check Kit
XP50s-hf 3:1 Water Jacketed Hose	578311	XTR 5+ Gun, 35 ft Integration Hose, Heated Hose Circulation Kit, Ratio Check Kit
XP50s-hf 4:1 Electric Heated Hose	578413	XTR 5+ Gun, 35 ft Integration Hose, Electric Heated Hose Controller, Ratio Check Kit
XP50s-hf 4:1 Water Jacketed Hose	578411	XTR 5+ Gun, 35 ft Integration Hose, Heated Hose Circulation Kit, Ratio Check Kit
XP70s-hf 1:1 Electric Heated Hose	577113	XTR 7+ Gun, 35 ft Integration Hose, Electric Heated Hose Controller, Ratio Check Kit
XP70s-hf 1:1 Water Jacketed Hose	577111	XTR 7+ Gun, 35 ft Integration Hose, Heated Hose Circulation Kit, Ratio Check Kit
XP70s-hf 2:1 Electric Heated Hose	577213	XTR 7+ Gun, 35 ft Integration Hose, Electric Heated Hose Controller, Ratio Check Kit
XP70s-hf 2:1 Water Jacketed Hose	577211	XTR 7+ Gun, 35 ft Integration Hose, Heated Hose Circulation Kit, Ratio Check Kit
XP70s-hf 3:1 Electric Heated Hose	577313	XTR 7+ Gun, 35 ft Integration Hose, Electric Heated Hose Controller, Ratio Check Kit
XP70s-hf 3:1 Water Jacketed Hose	577311	XTR 7+ Gun, 35 ft Integration Hose, Heated Hose Circulation Kit, Ratio Check Kit
XP70-hf 4:1 Electric Heated Hose	577413	XTR 7+ Gun, 35 ft Integration Hose, Electric Heated Hose Controller, Ratio Check Kit
XP70s-hf 4:1 Water Jacketed Hose	577411	XTR 7+ Gun, 35 ft Integration Hose, Heated Hose Circulation Kit, Ratio Check Kit

Systems are designed with individual components designed for explosive atmospheres. All packages include Merkur Solvent Flush Pump, Remote Manifold Carriage, XTR+ Gun, 35 ft integration hose and static mixers. 480V packages available. See page 29 for additional models.

XM

ADJUSTABLE RATIOS FROM 1:1 TO 10:1 — WITH ONE MACHINE

No matter the material or the ratio it requires, XM has you covered! Save time and money by mixing only the material you need, while also eliminating hand-mixing errors. Equipped with intuitive user controls, real-time display of ratio, and even downloadable data reporting you can be assured that the job was done right — every time.

EXCLUSIVE XTREME PUMP LOWERS

- Proven performance you can count on
- Multiple sizes available to provide various fixed mix ratios
- Easily change one or both lowers to get desired mix ratio
- Heavy-duty piston rods for long life

XL6500 10 INCH AIR MOTORS

- The proven air motor that is designed to keep you spraying and eliminate icing
- Heavy-duty aluminum, steel and composite construction for years of service
- De-ice valve keeps system ice-free during heavy icing conditions

PRECISION DOSING VALVES AND OUTLET MANIFOLD

- Precision dosing valves ensure the right ratio every time
- Provides automatic overpressure relief
- Allows circulation back to the supply for pump priming, purging or relieving outlet pressure
- Allows fluid warm-up circulation with integrated heaters

VISCON HF PRIMARY HEATERS

- Reduces coating viscosity and improves spray pattern
- Fully accessible heater core with serviceable heating elements.
- Easy to service

MIX MANIFOLD

- Provides simple fluid control for mixing or flushing
- Easily handles high-solids coatings with oversized porting and less pressure drop
- Position on unit, or remotely for ultimate convenience

OPTIONAL 25 GAL SST-LINED HEATED HOPPERS

- Double-walled construction with 3000w heaters to condition material
- Xtreme-Duty agitators easily mixes high viscosity coatings
- 5:1 Monark® Feed pumps easily transport materials from hopper to pumps

INTUITIVE USER CONTROLS

- Adjustable ratio control from 1:1 to 10:1
- LCD Display for real-time system information
- Ratio alarms automatically shut the system down in case of issues — saving time and money



XM SPARE PARTS KIT

- Convenient kit containing commonly needed repair parts for your XM system
- Reduce your downtime with kits to rebuild dosing valves and mix manifold



Part number:
25F106

AVAILABLE ACCESSORY

NON-HAZARDOUS LOCATION PACKAGES

DESCRIPTION	PART #	INCLUDES
XM50 Water Jacketed Hose	XM5M0W	Viscon HF Heaters, Heated Hose Circulation Kit
XP50s Water Jacketed Hose	XM5M2W	Viscon HF Heaters, Junction Box, Heated Hose Circulation Kit, 25 Gallon Double Wall Hoppers
XM50 Electric Heated Hose	XM5M0E	Viscon HF Heaters, Junction Box, Electric Heated Hose Controller
XM50s Electric Heated Hose	XM5M2E	Viscon HF Heaters, Junction Box, Electric Heated Hose Controller 25 Gallon Double Wall Hoppers
XM70 Water Jacketed Hose	XM7M0W	Viscon HF Heaters, Junction Box, Heated Hose Circulation Kit
XM70s Water Jacketed Hose	XM7M2W	Viscon HF Heaters, Junction Box, Heated Hose Circulation Kit, 25 Gallon Double Wall Hoppers
XM70 Electric Heated Hose	XM7M0E	Viscon HF Heaters, Junction Box, Electric Heated Hose Controller
XM70s Electric Heated Hose	XM7M2E	Viscon HF Heaters, Junction Box, Electric Heated Hose Controller 25 Gallon Double Wall Hoppers

All packages include Merkur Solvent Flush Pump, Remote Manifold Carriage, XTR+ Gun, 35 ft integration hose and static mixers. 480V packages available. See page 30 for additional models.

HAZARDOUS LOCATION PACKAGES

DESCRIPTION	PART #	INCLUDES
XM50 Bare	XM5N00	
XM50 with Viscon HP Heaters	XM5E00	Viscon HP Heaters
XM70 Bare	XM7N00	
XM70 with Viscon HP Heaters	XM7E00	Viscon HP Heaters

Systems carry top level approval for explosive atmospheres. All packages include Merkur Solvent Flush Pump, Remote Manifold Carriage, XTR+ Gun, 35 ft integration hose and static mixers.

HAZARDOUS LOCATION COMPONENTS PACKAGES

DESCRIPTION	PART #	INCLUDES
XM50 Water Jacketed Hose	XM5J0W	Viscon HF Heaters, Heated Hose Circulation Kit
XM50s Water Jacketed	XM5J2W	Viscon HF Heaters, Heated Hose Circulation Kit, 25 Gallon Double Wall Hoppers
XM50 Electric Heated Hose	XM5J0E	Viscon HF Heaters, Electric Heated Hose Controller
XM50s Electric Heated Hose	XM5J2E	Viscon HF Heaters, Electric Heated Hose Controller 25 Gallon Double Wall Hoppers
XM70 Water Jacketed Hose	XM7J0W	Viscon HF Heaters, Heated Hose Circulation Kit
XM70s Water Jacketed Hose	XM7J2W	Viscon HF Heaters, Heated Hose Circulation Kit, 25 Gallon Double Wall Hoppers
XM70 Electric Heated Hose	XM7J0E	Viscon HF Heaters, Electric Heated Hose Controller
XM70s Electric Heated Hose	XM7J2E	Viscon HF Heaters, Electric Heated Hose Controller 25 Gallon Double Wall Hoppers

Systems are designed with individual components designed for explosive atmospheres. 2009958 packages include Merkur Solvent Flush Pump, Junction Box, Remote Manifold Carriage, XTR+ Gun, 35 ft integration hose and static mixers. 480V packages available. See page 30 for additional models.

NO MATTER THE JOB, GRACO HAS THE RIGHT GUN FOR YOU

Contractors throughout the world prefer Graco guns for their outstanding durability and reliable performance. Whether your material is flake filled material or a thin body coating, Graco has best solution for any job.

MODEL	MAX WORKING PRESSURE	GUN FILTER	GUN SWIVEL	TRIGGER	FLUID PASSAGES
XRT5+	5000	Yes	Integrated	4 Finger	Standard (through handle)
Silver Plus	5000	No	Accessory	2 and 4 Finger	Large (direct to tip)
Silver Plus HP	7250	No	Accessory	2 and 4 Finger	Large (direct to tip)
XRT7+	7250	Yes	Integrated	4 Finger	Standard (through handle)
XRT7+ Hi Flo	7250	Yes	Integrated	4 Finger	Large (through handle)
XHF	7250	No	Accessory	4 Finger	Oversized (direct to tip)

XTR+

As the #1 choice of protective coating contractors, Graco’s XTR-5+, XTR-7+, and XTR-7+ High Flow Guns are designed to be the longest lasting, most reliable airless spray guns on the market.

VERSATILE DESIGN

- Available with both 2-Finger and 4-Finger triggers
- XTR5+ and XTR7+ feature two handle options providing maximum control and comfort even when handling heated materials
- Detachable trigger guard swings clear of gun handle for easy filter access

EASY OUT™ GUN FILTER

- Filters from the inside out to prevent filter from collapsing
- Optimized high viscosity fluid packages for the thickest of materials

BUILT-IN SWIVEL

- Exclusive dual-seat Swivel design reduces sealing friction under pressure, making this the best swivel on the market
- Optional suction sets or feed pumps for all size material containers

GUN TRIGGER AND TRIGGER LOCK

- Smooth, lightweight trigger pull with simple, thumb-engaged safety lock
- Custom trigger options

XTR5+AIRLESS SPRAY GUN, 5000 PSI (345 BAR, 34.5 MPA)

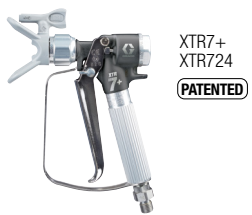
PART #	DESCRIPTION
XTR520	1 In Round Handle, 4-Finger Trigger, no Tip
XTR522	Oval-insulated Handle, 4-Finger Trigger, 519 XHD RAC
XTR524	1 In Round Handle, 4-Finger Trigger, 519 XHD RAC



XTR5+
XTR524
(PATENTED)

XTR7+ AIRLESS SPRAY GUN, 7250 PSI (500 BAR, 50 MPA)

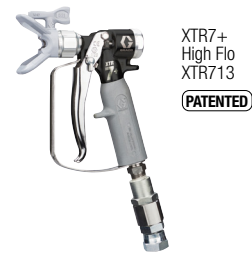
PART #	DESCRIPTION
XTR720	Round Handle, 4-Finger Trigger, no Tip
XTR722	Oval-insulated Handle, 4-Finger Trigger, 519 XHD RAC Tip
XTR724	Round Handle, 4-Finger Trigger, 519 XHD RAC Tip



XTR7+
XTR724
(PATENTED)

XTR7+™ HF HIGH FLOW AIRLESS SPRAY GUN, 7250 PSI (500 BAR)

PART #	DESCRIPTION
XTR712	Oval-insulated Handle, 4-Finger Trigger, 519 XHD RAC Tip



XTR7+
High Flo
XTR713
(PATENTED)

XTR+ GUN ACCESSORIES, (FITS BOTH XTR5+ AND XTR7+)

PART #	DESCRIPTION	PART #	DESCRIPTION
273141	Gun Repair Kit (includes Gasket, Needle, and Seat)	287032	Filter, 60 mesh
287449	4-Finger Round Trigger Kit	287033	Filter, 100 mesh
287450	2-Finger Trigger Kit	287034	Filter, 60 and 100 mesh combination
287451	4-Finger Oval Insulation Trigger Kit		

SILVER PLUS AND SILVER PLUS HP™

As the preferred gun for many contractors, Graco’s Silver Plus Gun is known for its durability, long life, spraying performance, and comfortable design.



Silver Plus HP Gun
273334
7250 psi
(PATENTED)

LASTS UP TO 2X LONGER
BETWEEN REPACKS



Silver Plus Gun
246240
5000 psi
(PATENTED)

LIGHTWEIGHT, RUGGED DESIGN

- Durable forged aluminum withstands harsh work environments
- Lighter weight than competitive guns
- Polished body is easy to clean

EXCLUSIVE NEEDLE DESIGN

- Factory-set needle needs no trigger adjustments
- Guaranteed for life against breakage
- Maximum performance and long life

STAINLESS STEEL FLUID TUBE

Fluid flows directly to the tip through the gun fluid tube, giving you the ability to spray heavier materials, such as high solid coatings and mastics, up to 7250 psi* (500 bar, 50.0 MPA)

*Silver Plus HP

ERGONOMIC DESIGN HANDLE

- Form-fitted handle for less fatigue
- Provides more control of gun while spraying



SILVER PLUS AIRLESS SPRAY GUN 5000 PSI (345 BAR)

PART #	DESCRIPTION
273329	Silver Plus Gun (2-Finger) with XHD 519 Tip and Guard
235460	Silver Plus Gun (2-finger) with Flat Tip and Guard
235461	Silver Plus Gun (4-finger) with Flat Tip and Guard
235474	Repair Kit (Silver Plus)



SILVER PLUS HP AIRLESS SPRAY GUN 7250 PSI (500 BAR)

PART #	DESCRIPTION
273334	Silver Plus HP Gun (2-finger) with XHD 419 Tip and Guard
273335	Silver Plus HP Gun (4-finger) with XHD 419 Tip and Guard
20B225	Repair Kit (Silver Plus HP)



XHF HIGH-FLO

The XHF gun is the ideal choice for the heaviest coatings and fibrous materials. These guns feature oversized fluid passages and a filter-less design for maximum flow and superior atomization.



OVERSIZED FLUID PATH

- No-filter design offers minimal restriction and maximum flow
- Minimizes pack-out with heavy and filled materials
- Reduces pressure drop for superior atomization

JOBSITE PROVEN

- Perfect for the most demanding high viscosity, protective coatings, including epoxy intumescent coatings and fiber filled materials

PATENTED NEEDLE DESIGN

- Factory-set needle — no adjustment ever
- Heavy-duty design for maximum performance and long life

ERGONOMIC DESIGN

- Form-fitting handle provides maximum control and comfort while spraying
- Optimized trigger and lightweight design allows effortless, all-day spraying

XHF AIRLESS SPRAY GUN 7250 PSI (500 BAR)

PART #	DESCRIPTION
262854	XHF Gun, includes XHD 429 Tip
26C793	XHF Gun, Top Feed, includes XHD 429 Tip
273260	Repair Kit (XHF Gun)

AUTOMATIC AIRLESS GUNS

Control your spray applicator with a pneumatic air signal — perfect for use with a robotic arm or assembly line.

COMPACT DESIGN

- Easily mounted to any fixture or robotic arm
- Compact and lightweight to help increase production speed with low cost of ownership
- Optimized for use with protective coating materials up to 7250 psi (500 bar)



AUTOMATIC AIRLESS GUNS

PART #	DESCRIPTION
26C624	AL-5 gun, for high-pressure protective coatings materials, 5000 psi (350 bar)
26C625	AL-7 gun, for high-pressure protective coatings materials, 7250 psi (500 bar)

AUTOMATIC AIRLESS MANIFOLD ACCESSORIES

PART #	DESCRIPTION
241161	NPT Fittings, 5000 psi (350 bar)
241162	JIC Fittings, 5000 psi (350 bar)
26C622	NPT Fittings, 7250 psi (500 bar)
244930	High Flow Ambient or Temperature Conditioned Manifold for streaming or spraying, 5000 psi (350 bar)

GUN AND HOSE KITS

PART #	DESCRIPTION
26C962	XTR520, (2) XHD519 SwitchTips, hose and whip hose
26C963	XTR720, (2) XHD519 SwitchTips, hose and whip hose
273142	XTR520, (1) XHD317 and (1) XHD319 SwitchTips, hose and whip hose
273143	XTR720, (1) XHD317 and (1) XHD319 SwitchTips, hose and whip hose
19D624	Silver Plus, 50 ft hose bundle, whip hose, XHD417 SwitchTip
19D625	Silver Plus HP, 50 ft hose bundle, whip hose, XHD417 SwitchTip
19D646	Silver Plus, 150 ft hose bundle, whip hose, XHD417 SwitchTip
19D647	Silver Plus HP, 150 ft hose bundle, whip hose, XHD417 SwitchTip

HIGH PRESSURE FITTINGS KIT

PART #	DESCRIPTION
25A212	High Pressure Fittings Kit



GUNS SPLITTERS

PART #	DESCRIPTION
17V587	4-gun spray line manifold with ball valves, no independent flush
262826	Gun Splitter, 2 guns, with independent flush
288729	Gun Splitter, 2 guns, 5000 psi



GUNS SWIVELS

PART #	DESCRIPTION
17G980	1/2 in x 3/8 in 7250 PSI Gun Swivel
189018	1/4 in x 1/4 in 7250 PSI Gun Swivel
207948	1/2 in x 1/2 in 6500 PSI Z-Swivel
223340	1/4 in x 1/4 in 7250 PSI Z-Swivel

HEAVY-DUTY EXTENSIONS

- Attach to any airless spray gun or in-line valve
- Tough, lightweight aluminum poles
- Ideal for high pressure spraying



PART #	DESCRIPTION
246294	10 in (254 mm) Gun Extension, 7250 psi (500 bar, 50 MPa)
246295	15 in (380 mm) Gun Extension, 7250 psi (500 bar, 50 MPa)
246296	18 in (457 mm) Gun Extension, 7250 psi (500 bar, 50 MPa)

HEAVY-DUTY 18” JETROLLER™

- Combines the speed of spray with the simplicity of rolling
- Fits 9-18 in standard roller covers
- Coverts to a 42 in spray wand - just remove the roller head!
- For use with 7/8 in (22 mm) thread guns or fittings

PART #	DESCRIPTION	LENGTH
17U148	Heavy-Duty Extension with Handle 7250 psi 500 bar	42 in (107cm)
25D229	Heavy-Duty Extension with Handle and 18 in JetRoller 7250 psi 500 bar	42 in (107cm)



Fully adjustable handle for ultimate comfort

180° SPRAY NOZZLE

PART #	DESCRIPTION
246297	180° Spray Nozzle, 7/8-14 UNC-2B, 7250 psi (500 bar, 50 MPa)



RAC XHD TIPS AND GUARDS

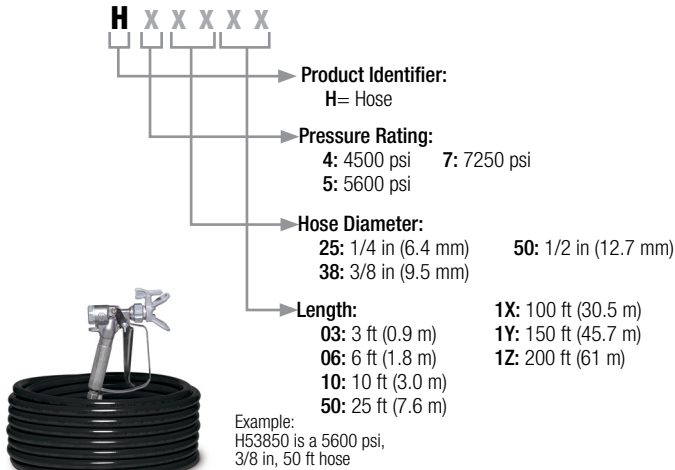
PART #	DESCRIPTION
XHDxxx	XHD SwitchTips, Gray (Odd #); Maximum Working Pressure: 7250 psi (500 bar, 50.0 MPa)
XHD001	XHD RAC Guard; Maximum Working Pressure: 7250 psi (500 bar, 50.0 MPa)
XHD010	Seal and Seal Kit (5-pack)

RAC XHD SWITCHTIPS (XHDXXX)

		ORIFICE SIZE																	
		IN	MM	.007	.009	.011	.013	.015	.017	.019	.021	.023	.025	.027	.029	.031	.033	.035	.037
FAN WIDTH	2-4	(51-102)	107	109	111	113	115	117	119	121									
	4-6	(102-152)		209	211	213	215	217	219	221			225	227	229	231		235	
	6-8	(152-203)	307	309	311	313	315	317	319	321	323	325	327	329	331	333	335	337	339
	8-10	(203-254)		409	411	413	415	417	419	421	423	425	427	429	431	433	435	437	439
	10-12	(254-305)		509	511	513	515	517	519	521	523	525	527	529	531	533	535	537	539
	12-14	(305-356)		609	611	613	615	617	619	621	623	625	627	629	631	633	635	637	639
	14-16	(356-406)			711	713	715	717	719	721	723	725	727	729	731	733	735	737	739
	16-18	(406-457)				813	815	817	819	821	823	825	827	829	831	833	835	837	839
	18-20	(457-508)									923	925	927		931	933	935	937	939
	FLOW RATE (GPM)		.05	.09	.12	.18	.24	.31	.38	.47	.57	.67	.77	.90	1.03	1.17	1.31	1.47	1.63
		FLOW RATE (LPM)	.20	.33	.49	.69	.91	1.17	1.47	1.79	2.15	2.54	2.96	3.42	3.90	4.42	4.98	5.56	6.18

		ORIFICE SIZE											
		IN	MM	.051	.053	.055	.057	.059	.061	.063	.065	.067	.069
FAN WIDTH	2-4	(51-102)											
	4-6	(102-152)											
	6-8	(152-203)	351		355								
	8-10	(203-254)	451		455		459	461	463	465	467		471
	10-12	(254-305)	551	553	555	557		561		565	567		571
	12-14	(305-356)	651		655	657	659	661	663	665	667	669	671
	14-16	(356-406)	751	753	755			761			767		771
	16-18	(406-457)	851		855			861	863		867		
	18-20	(457-508)											
	FLOW RATE (GPM)		2.79	3.05	3.25	3.49	3.74	4.0	4.26	4.53	4.82	5.11	5.41
		FLOW RATE (LPM)	10.57	11.41	12.29	13.20	14.14	15.12	16.13	17.17	18.24	19.34	20.48

XTREME-DUTY HIGH PRESSURE HOSE



CHOOSE THE RIGHT HOSE FOR THE JOB

PART #	DESCRIPTION
Working Pressure	4500 psi (310 bar), 5600 psi (386 bar) or 7250 psi (500 bar)
Temperature Rating (all sizes)	-40° to 180°F (-40° to 82°C)
Chemical Resistance	Hose cover resistant to a wide variety of solvents, acids, and bases
Weather Resistance	Hose cover has outstanding resistance to oxygen, ozone, sunlight, and general weather conditions
Electrical Properties	Conductive hose

3/4 IN XTREME-DUTY HIGH PRESSURE HOSE

PART #	DESCRIPTION
H77550	3/4 in x 50 ft (6.4 mm x 15 m) FBE Xtreme-Duty High Pressure Hose; Maximum Working Pressure: 7250 psi (500 bar)

FOR USE WITH XP OR XM SYSTEMS

Cannot be linked together

ELECTRIC HEATED HOSE – *Approved for explosive atmospheres Class 1 Div 1*
7250 psi (500 bar, 50.0 MPa) *Continuous length*

50 ft (15 m)

PART #	DESCRIPTION
HH73215	Electric Heated hose, 3/8 in (A), 1/4 in (B) with solvent line, no return line
HH73225	Electric Heated hose, 3/8 in (A), 1/4 in (B) with solvent line, 2 x 3/8 in return line
HH73315	Electric Heated hose, 3/8 in (A), 3/8 in (B) with solvent line, no return lines
HH73325	Electric Heated hose, 3/8 in (A), 3/8 in (B) with solvent line, 2 x 3/8 in return line
HH75215	Electric Heated hose, 1/2 in (A), 1/4 in (B) with solvent line, no return lines
HH75225	Electric Heated hose, 1/2 in (A), 1/4 in (B) with solvent line, 2 x 3/8 in return lines
HH75315	Electric Heated hose, 1/2 in (A), 3/8 in (B) with solvent line, no return lines
HH75325	Electric Heated hose, 1/2 in (A), 3/8 in (B) with solvent line, 2 x 3/8 in return lines
HH75335	Electric Heated hose, 1/2 in (A), 3/8 in and 1/4 in (B) with solvent line, no return lines
HH75345	Electric Heated hose, 1/2 in (A), 3/8 in and 1/4 in (B) with solvent line, 2 x 3/8 in return lines
HH75515	Electric Heated hose, 1/2 in (A), 1/2 in (B) with solvent line, no return lines
HH75525	Electric Heated hose, 1/2 in (A), 1/2 in (B) with solvent line, 2 x 3/8 in return lines

100 ft (30 m)

PART #	DESCRIPTION
HH7321X	Electric Heated hose, 3/8 in (A), 1/4 in (B) with solvent line, no return line
HH7322X	Electric Heated hose, 3/8 in (A), 1/4 in (B) with solvent line, 2 x 3/8 in return line
HH7331X	Electric Heated hose, 3/8 in (A), 3/8 in (B) with solvent line, no return lines
HH7332X	Electric Heated hose, 3/8 in (A), 3/8 in (B) with solvent line, 2 x 3/8 in return line
HH7521X	Electric Heated hose, 1/2 in (A), 1/4 in (B) with solvent line, no return lines
HH7522X	Electric Heated hose, 1/2 in (A), 1/4 in (B) with solvent line, 2 x 3/8 in return line
HH7531X	Electric Heated hose, 1/2 in (A), 3/8 in (B) with solvent line, no return lines
HH7532X	Electric Heated hose, 1/2 in (A), 3/8 in (B) with solvent line, 2 x 3/8 in return line
HH7533X	Electric Heated hose, 1/2 in (A), 3/8 in and 1/4in (B) with solvent line, no return lines
HH7534X	Electric Heated hose, 1/2 in (A), 3/8 in and 1/4in (B) with solvent line, 2 x 3/8 in return lines
HH7551X	Electric Heated hose, 1/2 in (A), 1/2 in (B) with solvent line, no return lines
HH7552X	Electric Heated hose, 1/2 in (A), 1/2 in (B) with solvent line, 2 x 3/8 in return lines

150 ft (45 m)

PART #	DESCRIPTION
HH7321Y	Electric Heated hose, 3/8 in (A), 1/4 in (B) with solvent line, no return lines
HH7322Y	Electric Heated hose, 3/8 in (A), 1/4 in (B) with solvent line, 2 x 3/8 in return lines
HH7331Y	Electric Heated hose, 3/8 in (A), 3/8 in (B) with solvent line, no return lines
HH7332Y	Electric Heated hose, 3/8 in (A), 3/8 in (B) with solvent line, 2 x 3/8 in return lines
HH7521Y	Electric Heated hose, 1/2 in (A), 1/4 in (B) with solvent line, no return line
HH7522Y	Electric Heated hose, 1/2 in (A), 1/4 in (B) with solvent line, 2 x 3/8 in return line
HH7531Y	Electric Heated hose, 1/2 in (A), 3/8 in (B) with solvent line, no return lines
HH7532Y	Electric Heated hose, 1/2 in (A), 3/8 in (B) with solvent line, 2 x 3/8 in return lines
HH7533Y	Electric Heated hose, 1/2 in (A), 3/8 in and 1/4 in (B) with solvent line, no return lines
HH7534Y	Electric Heated hose, 1/2 in (A), 3/8 in and 1/4 in (B) with solvent line, 2 x 3/8 in return lines
HH7551Y	Electric Heated hose, 1/2 in (A), 1/2 in (B) with solvent line, no return lines
HH7552Y	Electric Heated hose, 1/2 in (A), 1/2 in (B) with solvent line, 2 x 3/8 in return lines

200 ft (60 m)

PART #	DESCRIPTION
HH7321Z	Electric Heated hose, 3/8 in (A), 1/4 in (B) with solvent line, no return lines
HH7322Z	Electric Heated hose, 3/8 in (A), 1/4 in (B) with solvent line, 2 x 3/8 in return lines
HH7331Z	Electric Heated hose, 3/8 in (A), 3/8 in (B) with solvent line, no return lines
HH7332Z	Electric Heated hose, 3/8 in (A), 3/8 in (B) with solvent line, 2 x 3/8 in return lines
HH7521Z	Electric Heated hose, 1/2 in (A), 1/4 in (B) with solvent line, no return lines
HH7522Z	Electric Heated hose, 1/2 in (A), 1/4 in (B) with solvent line, 2 x 3/8 in return lines
HH7531Z	Electric Heated hose, 1/2 in (A), 3/8 in with solvent line, no return lines
HH7532Z	Electric Heated hose, 1/2 in (A), 3/8 in with solvent line, 2 x 3/8"return lines
HH7533Z	Electric Heated hose, 1/2 in (A), 3/8 in and 1/4 in (B) with solvent line, no return lines
HH7534Z	Electric Heated hose, 1/2 in (A), 3/8 in and 1/4 in (B) with solvent line, 2 x 3/8 in return lines
HH7551Z	Electric Heated hose, 1/2 in (A), 1/2 in (B) with solvent line, no return lines
HH7552Z	Electric Heated hose, 1/2 in (A), 1/2 in (B) with solvent line, 2 x 3/8 in return lines

ELECTRIC HEATED HOSE ACCESSORIES

PART #	DESCRIPTION
18C175	Controller for heated hose, stand alone, 240 Volt
18A373	Transformer, 480 Volt to 240 Volt
420033	Circulation kit for remote mix manifold, XP
273185	Circulation kit for remote mix manifold, XM

WATER JACKETED HEATED HOSE –

Approved for explosive atmospheres ATEX and Class 1 Div 1 – 50 ft (15.2 m) sections

PART #	DESCRIPTION
245840	Single hose, 1/4 in (6.3 mm), 5000 psi (345 bar, 34.5 MPa)
245841	Single hose, 1/4 in (6.3 mm), 7250 psi (500 bar, 50 MPa)
245842	Single hose, 3/8 in (9.5 mm), 5000 psi (345 bar, 34.5 MPa)
245843	Single hose, 3/8 in (9.5 mm), 7250 psi (500 bar, 50 MPa)
245844	Single hose, 1/2 in (12.7 mm), 5000 psi (345 bar, 34.5 MPa)
245845	Single hose, 1/2 in (12.7 mm), 7250 psi (500 bar, 50 MPa)
248118	Dual hose, 1/2 in and 1/2 in (12.7 mm) 7250 psi (345 bar, 3.45 MPa)
248119	Dual hose, 3/8 in and 3/8 in (9.5 mm) 7250 psi (345 bar, 3.45 MPa)
248120	Dual hose, 1/2 in and 3/8 in (12.7 and 9.5 mm) 7250 psi (345 bar, 3.45 MPa
248121	Dual hose, 3/8 in and 1/4 in (9.5 and 6.3 mm) 7250 psi (345 bar, 3.45 MPa)

WATER JACKETED HEATED HOSE ACCESSORIES

PART #	DESCRIPTION
25N580	Kit, Hose Heat Circulation, XP skid, Viscon HP (245869) included
26C051	Kit, Hose Heat Circulation Retrofit, XP cart, no heater included

HOSE INSULATION AND SCUFF GUARD –

(Provides extra insulation and protection of your hose)

PART #	DESCRIPTION
24J525	50 ft insulation for one material hose
246078	Scuff Guard, 50 ft (15.2 m) blue braided polyester mesh 2.5 in diameter
16T138	Reusable scuff jacket with hook and loop fastener, 50 ft (15.2 m)

FOR USE WITH E-MIX XT

Cannot be linked together

ELECTRIC HEATED HOSE – *Not approved for explosive atmospheres*
5000 psi (345 bar, 34.5 MPa) *Continuous length*

COMPLETE HEATED HOSE KIT (FAHERENHEIT)

PART #	DESCRIPTION
2007169	Kit, Heated Hose, 1/2 in x 1/2 in x 50 ft, Controller, F, Install Kit
2007171	Kit, Heated Hose, 1/2 in x 1/2 in x 100 ft, Controller, F, Install Kit
2007173	Kit, Heated Hose, 1/2 in x 3/8 in x 50 ft, Controller, F, Install Kit
2007175	Kit, Heated Hose, 1/2 in x 3/8 in x 100 ft, Controller, F, Install Kit

COMPLETE HEATED HOSE KIT (CELCIUS)

PART #	DESCRIPTION
2007170	Kit, Heated Hose, 1/2 in x 1/2 in x 50 ft, Controller, C, Install Kit
2007172	Kit, Heated Hose, 1/2 in x 1/2 in x 100 ft, Controller, C, Install Kit
2007174	Kit, Heated Hose, 1/2 in x 3/8 in x 50 ft, Controller, C, Install Kit
2007176	Kit, Heated Hose, 1/2 in x 3/8 in x 100 ft, Controller, C, Install Kit

HEATED HOSES

PART #	DESCRIPTION
HH5555	Heated Hose, 1/2 in x 1/2 in x 50 ft
HH555X	Heated Hose, 1/2 in x 1/2 in x 100 ft
HH5535	Heated Hose, 1/2 in x 3/8 in x 50 ft
HH553X	Heated Hose, 1/2 in x 3/8 in x 100 ft

HEATED HOSE CONTROLLERS

PART #	DESCRIPTION
2006697	Kit, Controller, 240V, Heated Hose (F)
2006698	Kit, Controller, 240V, Heated Hose (C)
2006565	Heated Hose Controller Installation Kit

ELBOW FITTING

PART #	DESCRIPTION
100840	7500 psi (517 bar) 1/4 npt (m) x 1/4 npt (f), Street 90
164259	7250 psi (500 bar) 3/8 npt (m) x 1/4 npt (f), Street 90
155699	7250 psi (500 bar) 3/8 npt (m) x 3/8 npt (f), Street 90
166999	7250 psi (500 bar) 1/2 npt (m) x 1/4 npt (f), Street 90
158683	7250 psi (500 bar) 1/2 npt (m) x 1/2 npt (f), Street 90
15M987	7250 psi (500 bar) 1/2 npt (m) x 1/2 npt (f), Street 60
166590	7250 psi (500 bar) 3/4 npt (m) x 3/4 npt (f), Street 90

NIPPLE

PART #	DESCRIPTION
503086	5000 psi (345 bar) 1 npt (m) x 1/2 npt (m), 2-1/8 in Reducing, Hex SST
15R232	6600 psi (455 bar) 3/4 npt (m) x 1/2 npt (m), 2 in Reducing, Hex SST
171439	6000 psi (455 bar) 1 npt (m) x 3/4 npt (m), 2 in Reducing, Hex SST
166606	7000 psi (483 bar) 3/4 npt (m) x 3/8 npt (m), 4-1/2 in Reducing, Hex
166846	7250 psi (500 bar) 1/4 npt (m) x 1/4 npsm (m), 1-3/16 in Reducing, Hex SST
164672	7250 psi (500 bar) 3/8 npt (m) x 1/4 npsm (m), 2-3/4 in Reducing, Hex
156849	7250 psi (500 bar) 3/8 npt (m) x 3/8 npt (m), 1-1/2 in Reducing, Hex
156850	7250 psi (500 bar) 3/8 npt (m) x 3/8 npt (m), 2-1/2 in Reducing, Hex
160790	7250 psi (500 bar) 3/8 npt (m) x 3/8 npt (m), 3-5/8 in Reducing, Hex
158979	7250 psi (500 bar) 1/2 npt (m) x 3/8 npt (m), 2-3/4 in Reducing, Hex
156877	7250 psi (500 bar) 1/2 npt (m) x 1/2 npt (m), 2-1/2 in Reducing, Hex
157129	7250 psi (500 bar) 3/4 npt (m) x 3/8 npt (m), 3-1/4 in Reducing, Hex
16R883	7250 psi (500 bar) 3/4 npt (m) x 1/2 npt (m), 2 in Reducing, Hex SST
17J816	7250 psi (500 bar) 3/4 npt (m) x 3/4 npt (m), 2-1/2 in Reducing, Hex SST
160032	7250 psi (500 bar) 3/4 npt (m) x 3/4 npt (m), 1-7/8 in Reducing, Hex
175013	7250 psi (500 bar) 3/4 npt (m) x 3/4 npt (m), 2-1/2 in Reducing, Hex
162449	7400 psi (510 bar) 1/2 npt (m) x 1/4 npt (m), 1-5/8 in Reducing, Hex
159239	7400 psi (510 bar) 1/2 npt (m) x 3/8 npt (m), 1-5/8 in Reducing, Hex
158491	7400 psi (510 bar) 1/2 npt (m) x 1/2 npt (m), 1-5/8 in Reducing, Hex
162453	7500 psi (514 bar) 1/4 npt (m) x 1/4 npsm (m), 1-1/5 in Reducing, Hex
156971	7500 psi (514 bar) 1/4 npt (m) x 1/4 npt (m), 1-3/8 in Reducing, Hex
196181	7500 psi (514 bar) 1/4 npt (m) x 1/4 npsm (m), 1-1/5 in Reducing, Hex Nickle
164856	8000 psi (552 bar) 3/8 npt (m) x 1/4 npsm (m), 1-5/8 in Reducing, Hex
192593	8000 psi (552 bar) 3/4 npt (m) x 1/2 npsm (m), 2-3/4 in Reducing, Hex SST

UNIONS

PART #	DESCRIPTION
114339	5000 psi (345 bar), 1/4 npt (m) x 1/4 npsm (f), SST
156172	5000 psi (345 bar), 3/4 npt (f) x 3/4 npt (f)
113344	5500 psi (380 bar), 3/4 npt (f) x 1/2 npt (m)
155653	6000 psi (455 bar), 1/2 npt (f) x 1/4 npt (f)
207152	7250 psi (500 bar), 3/8 npt (f) x 3/8 npsm (f)
155864	7250 psi (500 bar), 1/2 npt (m) x 1/2 npsm (f)
155865	7250 psi (500 bar), 1/2 npt (f) x 1/2 npsm (f)
156173	7400 psi (510 bar), 3/8 npt (f) x 3/8 npsm (f)
159153	7500 psi (514 bar), 3/8 npt (f) x 1/4 npt (f)
157705	7500 psi (514 bar), 3/8 npsm (f) x 1/4 npt (m)
155665	7500 psi (514 bar), 3/8 npt (f) x 3/8 npsm (f)
235208	7500 psi (514 bar), 3/8 npt (f) x 3/8 npsm (f), SST
162505	7500 psi (514 bar), 1/2 npsm (f) x 3/8 npt (m)
158256	7500 psi (514 bar), 1/2 npt (m) x 3/8 npsm (f)
155570	10000 psi (690 bar), 1/4 npt (f) x 1/4 npsm (f)
156823	10000 psi (690 bar), 1/4 npt (m) x 1/4 npsm (f)

TEE FITTING

PART #	DESCRIPTION
16U937	6000 psi (455 bar) 1 in npt(m), 3/4 in npt (f), 3/8 in npt (f)
15R875	7250 psi (500 bar) 1/4 in npt(m), 1/4 in npt (f), 1/4 in npt (f)
15R874	7250 psi (500 bar) 3/8 in npt(m), 3/8 in npt (f), 3/8 in npt (f)
15R873	7250 psi (500 bar) 1/2 in npt(m), 1/2 in npt (f), 1/2 in npt (f)
17B815	7250 psi (500 bar) 3/4 in npt(m), 3/4 in npt (m), 3/8 in npt (f)

REDUCING BUSHINGS

PART #	DESCRIPTION
158586	6000 psi (455 bar) 1 npt (m) x 3/4 npt (f)
159841	7250 psi (500 bar) 3/8 npt (m) x 1/4 npt (f)
100206	7250 psi (500 bar) 1/2 npt (m) x 1/4 npt (f)
121433	7250 psi (500 bar) 1/2 npt (m) x 3/8 npt (f)
16T315	7250 psi (500 bar) 3/4 npt (m) x 1/2 npt (f)
15R067	7250 psi (500 bar) 1 npt (m) x 1/2 npt (f)
171439	7250 psi (500 bar) 1 npt (m) x 3/4 npt (f)

COUPLING

PART #	DESCRIPTION
113093	7250 psi (500 bar) 1/4 npt (f) x 1/4 npt (f)
162024	7250 psi (500 bar) 3/8 npt (f) x 3/8 npt (f)
158581	7250 psi (500 bar) 1/2 npt (f) x 1/2 npt (f)

COUPLING ADAPTER

PART #	DESCRIPTION
113093	7250 psi (500 bar) 3/8 npt (m) x 3/8 npt (f). Used for static Mixer 15E592
162024	7250 psi (500 bar) 3/8 npt (f) x 3/8 npsm (m)
158581	7250 psi (500 bar) 3/8 npt (f) x 1/4 npt (m)

PLUG

PART #	DESCRIPTION
100721	7250 psi (500 bar) 1/4 npt, hex, socket, short
101754	7250 psi (500 bar) 3/8 npt, hex, socket, short
100361	7250 psi (500 bar) 1/2 npt, hex, socket, short

BALL VALVES

PART #	DESCRIPTION
102646	5000 psi (345 bar), 1/4 npt (m) x 1/4 npsm (f), SST
102644	5000 psi (345 bar), 3/4 npt (f) x 3/4 npt (f)
239018	6000 psi (455 bar), 1/2 npt (f) x 1/4 npt (f)
248271	7250 psi (500 bar), 3/8 npt (f) x 3/8 npsm (f)
214037	7250 psi (500 bar), 1/2 npt (m) x 1/2 npsm (f)
210657	7250 psi (500 bar), 1/2 npt (f) x 1/2 npsm (f)
238635	7400 psi (510 bar), 3/8 npt (f) x 3/8 npsm (f)
210659	7500 psi (514 bar), 3/8 npt (f) x 1/4 npt (f)
235992	7500 psi (514 bar), 3/8 npsm (f) x 1/4 npt (m)
210658	7500 psi (514 bar), 3/8 npt (f) x 3/8 npsm (f)
262739	7500 psi (514 bar), 3/8 npt (f) x 3/8 npsm (f), SST
262740	7500 psi (514 bar), 1/2 npsm (f) x 3/8 npt (m)
237303	7500 psi (514 bar), 1/2 npt (m) x 3/8 npsm (f)
237304	10000 psi (690 bar), 1/4 npt (f) x 1/4 npsm (f)

HOPPERS AND FEED PUMPS*

*Feed pump kits For 55 gal (200 L) drums

PART #	DESCRIPTION
24Y389	Hopper, 10 Gal (38 L) SST, for XP
24Y390	Hopper, 10 Gal (38 L) SST, for XM
25N582	Hopper, 25 gal (95 L), SST lined, Bare (no heater, pump or agitator)
26C482	Hopper 25 gal (95 L), SST Lined, includes immersion heater (240V), Monark 5:1 feed pump and Xtreme Duty Agitator
26B279	Hopper 25 gal (95 L), SST Lined, includes immersion heater (480V), Monark 5:1 feed pump and Xtreme Duty Agitator
25N675	Hopper, 25 gal (95 L), SST lined, includes immersion heater (240V), Xtreme duty Agitator
25N676	Hopper, 25 Gal (95 L), SST lined, includes immersion heater (240V) gravity feed (no feed pump or agitator)
26C549	Tank base kit, includes fork pockets and casters for 25 gal hoppers.
256276	Monark 5:1 Feed Pump with air and fluid connections
256433	President 10:1 Feed Pump with air and fluid connections
2009958	EFP-350XT Electric Feed Pump Bare
2009960	EFP-350XT Electric Feed Pump with fluid hoses and Y-strainer

AGITATORS

PART #	DESCRIPTION
256274	Twistork (Carbon Steel) drum length agitator kit w/air connections
235534	Twistork (Stainless Steel) drum length agitator kit w/air connections
243340	5 gal pail agitator kit with lid and mounting hardware
25A598	Xtreme Duty Agitator, Bare
25A599	Xtreme Duty Agitator on drum cover with handles
25A600	Xtreme Duty Agitator on drum cover with elevator
25A601	Xtreme Duty Agitator on drum cover with elevator and 5:1 Monark
25A602	Xtreme Duty Agitator on drum cover with elevator and 5:1 Monark SST
25A603	Xtreme Duty Agitator on drum cover with elevator and 10:1 President
25A604	Xtreme Duty Agitator on drum cover with elevator and 10:1 President SST
26C729	Expanding Blade Agitator

PRESSURETRAK

Approved for use in hazardous locations

PART #	DESCRIPTION
26C427	Pressuretrak for use with XP units using the XL6500 air motor
26C452	PressureTrak for use with the XP-HF and XPs-HF units using the XL10000 air motor

PRESSURE MONITOR

PART #	DESCRIPTION
262940	Pressure Monitor, electric wall power, for XP units with XL6500 air motor
262942	Pressure Monitor, turbine power, for XP units with XL6500 air motor
26C008	Pressure Monitor, electric wall power, for XP-HF and XPs-HF units with XL10000 air motor
26C009	Pressure Monitor, turbine power, for XP-HF and XPs-HF units with XL10000 air motor

MANIFOLDS

PART #	DESCRIPTION
24M398	XP Quick-Set mix manifold with carriage, A/B pressure gauges and A/B flush valves
24Z934	Remote Mix manifold, carriage only, water heated block, XP
255684	Mix Manifold XM
256980	Remote mix manifold conversion kit with protective guard, XM
262807	Standard mix manifold, XP, no carriage
262522	Carriage Only – no mix manifold

FLUID FILTERS

PART #	DESCRIPTION
16V583	External Paint Outlet Filter Kit
19D955	Poly Filter Support for integral and external filters
244841	Carbon Steel Filter Support for integral and external filters
224458	30 Mesh filter element – 2 Pack
224459	60 Mesh filter element – 2 Pack
224468	100 Mesh filter element – 2 Pack
16G819	Xtreme Filter Cap Wrench

VISCON HEATERS

PART #	DESCRIPTION
245848	Viscon HP Haz-Loc 120 VAC, 2300 watts, 19.2 amps
245862	Viscon HP Haz-Loc 200 VAC, 4000 watts, 20.0 amps
245863	Viscon HP Haz-Loc 240 VAC, 4000 watts, 16.7 amps
246254	Viscon HP Haz-Loc 400 VAC, 4000 watts, 10.5 amps
245864	Viscon HP Haz-Loc 480 VAC, 4000 watts, 8.3 amps
245867	Viscon HP Non-Hazardous 120 VAC, 2300 watts, 19.2 amps
245868	Viscon HP Non-Hazardous 200 VAC, 4000 watts, 20.0 amps
245869	Viscon HP Non-Hazardous 240 VAC, 4000 watts, 16.7 amps
246276	Viscon HP Non-Hazardous 400 VAC, 4000 watts, 10.5 amps
245870	Viscon HP Non-Hazardous 480 VAC, 4000 watts, 8.3 amps
24W248	Viscon HF Haz-Loc 240 VAC, 5400 watts, 22.5 amps
26C476	Viscon HF Haz-Loc 480 VAC, 5400 watts, 11.3 amps
24P016	Viscon HF Non-Hazardous 240 VAC, 5400 watts, 22.5 amps
26C475	Viscon HF Non-Hazardous 480 VAC, 5400 watts, 11.3 amps

ADDITIONAL HEATER ACCESSORIES

PART #	DESCRIPTION
19D968	Heater mounting kit for Viscon HP and HF heater on XP/XM
19D955	Heater, Band, 55 gal (200 L), 240 Volts, 1000 watts, 4.35 amps
244841	Cable assembly, 1 gland, 30 m
288527	Cable assembly, 2 glands, 8 m*
116635	Cable assembly, 2 glands, 15 m*
24Z273	Cable assembly, 2 glands, 30 m*
121171	Cable insert for non-hazardous locations only, no cable

DUAL-FLO HEATERS

PART #	DESCRIPTION
2007357	Dual-Flo Heater for E-Mix XT Complete
2007208	Heater rod and temp sensor repair kit for Dual-Flo Heater.

RATIO CHECK KITS

PART #	DESCRIPTION
2000308	Ratio Check Kit for XPs
2007389	Ratio Check Kit for E-Mix XT
2000697	Ratio Check Restrictor Kit

STATIC MIXING – 7250 psi (500 bar, 50.0 MPa)

PART #	DESCRIPTION
248925	1/4 in x 12 ft whip hose mixing kit, includes (2) 15E592 housings and 6 static mixer inserts
262478	Static Mixer Housing, 1/2 in ID x 5 in (127mm), uses 248927 disposable elements
248927	25-pack, Plastic (acetal) disposable static mixer, 1/2 in 12 element
511352	Stainless steel static mixer, 12 element, 3/8 in x 9.5 in (241mm)

LEARN MORE AT [GRACO.COM/ACCESSORIES](https://www.graco.com/accessories)

XTREME LOWERS



XP PUMP LOWERS

PART #	DESCRIPTION
L036C0	36cc Xtreme Pump for XP, XP-HF, and XPs-HF
L048C0	48cc Xtreme Pump for XP, XP-HF, and XPs-HF
L054C0	54cc Xtreme Pump for XP, XP-HF, and XPs-HF
L058C0	58cc Xtreme Pump for XP, XP-HF, and XPs-HF
L072C0	72cc Xtreme Pump for XP, XP-HF, and XPs-HF
L085C0	85cc Xtreme Pump for XP, XP-HF, and XPs-HF
L090C0	90cc Xtreme Pump for XP, XP-HF, and XPs-HF
L115C0	115cc Xtreme Pump for XP, XP-HF, and XPs-HF
L14AC0	145cc Xtreme Pump for XP, XP-HF, and XPs-HF
L18AC0	180cc Xtreme Pump for XP, XP-HF, and XPs-HF
L22AC0	220cc Xtreme Pump for XP Only
L22XC0	220cc Xtreme Pump for XP-HF, and XPs-HF only
L25AC0	250cc Xtreme Pump for XP, XP-HF, and XPs-HF
L29AC0	290cc Xtreme Pump for XP, XP-HF, and XPs-HF



REPAIR KITS

UHMWPE/PTFE packings. Ideal for chemical resistance and durability in applications below 140°F (60°C).

PART #	DESCRIPTION
25D249	36cc Xtreme Pump Lower Repair Kit
25D250	48cc Xtreme Pump Lower Repair Kit
25D251	54cc Xtreme Pump Lower Repair Kit
25D252	58cc Xtreme Pump Lower Repair Kit
25D253	72cc Xtreme Pump Lower Repair Kit
25D254	85cc Xtreme Pump Lower Repair Kit
25D255	90cc Xtreme Pump Lower Repair Kit
25D256	97cc Xtreme Pump Lower Repair Kit
25D257	115cc Xtreme Pump Lower Repair Kit, Series G and older
273269	115cc Xtreme Pump Lower Repair Kit, Series H and newer
25D258	145cc Xtreme Pump Lower Repair Kit
25D259	180cc Xtreme Pump Lower Repair Kit
25D260	220cc Xtreme Pump Lower Repair Kit
25D261	250cc Xtreme Pump Lower Repair Kit
25D262	290cc Xtreme Pump Lower Repair Kit



PTFE packings. Ideal for chemical resistance and higher temps.

PART #	DESCRIPTION
25D239	36cc Xtreme Pump Lower Repair Kit
25D240	48cc Xtreme Pump Lower Repair Kit
273241	58cc Xtreme Pump Lower Repair Kit
25D242	85cc Xtreme Pump Lower Repair Kit
25D243	115cc Xtreme Pump Lower Repair Kit, Series G and older
273268	115cc Xtreme Pump Lower Repair Kit, Series H and newer
25D244	145cc Xtreme Pump Lower Repair Kit
25D245	180cc Xtreme Pump Lower Repair Kit
25D246	220cc Xtreme Pump Lower Repair Kit
25D247	250cc Xtreme Pump Lower Repair Kit
25D248	290cc Xtreme Pump Lower Repair Kit



E-MIX XT REPAIR KIT

PART #	DESCRIPTION
25D252	Packing Kit for E-Mix XT



CERAMIC BALLS

XTREME LOWER	CERAMIC PISTON BALL	CERAMIC INLET BALL
115*	111453	119264
145	111453	119264
180	111453	119264
220	118602	131271
290	117321	131271

*115cc Series H and newer.



		XP50	XP50-HF
SPECIFICATIONS	FRAME	Cart	Cart
	MOTOR SIZE (CC)	XL 6500	XL 10000
	MAX FLUID PRESSURE (BAR)	5000 (345)	5000 (345)
	GPM (LPM) AT 40 CPM (APPROXIMATE)	3 (11.4)	4 (15.1)
	HOPPERS	7 Gallon Plastic Hoppers	7 Gallon Plastic Hoppers
MODEL	CONFIGURATION	HAZARDOUS LOCATION	NON-HAZARDOUS LOCATION
	Bare	282102 – 1:1 282202 – 2:1 282302 – 3:1 282402 – 4:1	573102 – 1:1 573202 – 2:1 573302 – 3:1 573402 – 4:1
	With Primary Heaters	282104 – 1:1 282204 – 2:1 282304 – 3:1 282404 – 4:1	575105 – 1:1 575205 – 2:1 575305 – 3:1 575405 – 4:1
	With Primary Heaters Hose Heat	575106 – 1:1 575206 – 2:1 575306 – 3:1 575406 – 4:1	575107 – 1:1 575207 – 2:1 575307 – 3:1 575407 – 4:1

		XP70	XP70-HF
SPECIFICATIONS	FRAME	Skid	Skid
	MOTOR SIZE (CC)	XL 6500	XL 10000
	MAX FLUID PRESSURE (BAR)	7250 (500)	7250 (500)
	GPM (LPM) AT 40 CPM (APPROXIMATE)	2 (7.6)	3 (11.4)
	HOPPERS	7 Gallon Plastic Hoppers	7 Gallon Plastic Hoppers
MODEL	CONFIGURATION	HAZARDOUS LOCATION	NON-HAZARDOUS LOCATION
	Bare	571102 – 1:1 571202 – 2:1 571302 – 3:1 571402 – 4:1	572102 – 1:1 572202 – 2:1 572302 – 3:1 572402 – 4:1
	With Primary Heaters	571104 – 1:1 571204 – 2:1 571304 – 3:1 571404 – 4:1	576105 – 1:1 576205 – 2:1 576305 – 3:1 576405 – 4:1
	With Primary Heaters Hose Heat	576106 – 1:1 576206 – 2:1 576306 – 3:1 576406 – 4:1	576107 – 1:1 576207 – 2:1 576307 – 3:1 576407 – 4:1



XM PUMP LOWERS

PART #	DESCRIPTION
L145C3	145cc Xtreme Pump for XM70, No Filter
L145C4	145cc Xtreme Pump for XM70, Built-In Filter
L180C3	180cc Xtreme Pump for XM70, No Filter
L180C4	180cc Xtreme Pump for XM70, Built-In Filter
L220C3	220cc Xtreme Pump for XM50, No Filter
L220C3	220cc Xtreme Pump for XM50, Built-In Filter
L250C3	250cc Xtreme Pump for XM50, No Filter
L250C4	250cc Xtreme Pump for XM50, Built-In Filter

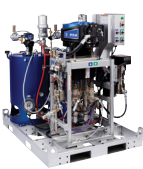


E-MIX XT PUMP LOWER

PART #	DESCRIPTION
2007207	Pro Connect Endurance Pump for E-Mix XT A or B side

INCLUDES	MODEL	BARE: xxxxx2	W/PRIMARY HEATERS: xxxxx4	W/PRIMARY HEATERS: xxxxx5	W/PRIMARY HEATERS AND HOSE HEAT: xxxxx6	W/PRIMARY HEATERS AND HOSE HEAT: xxxxx7
	MIX MANIFOLD	On unit	On unit	On unit	Remote Carriage Included	Remote Carriage Included
	PRIMARY HEATER	N/A	Viscon* 240V	Viscon* 240V	Viscon* 240V	Viscon* 240V
	RATIO– FIXED	(available 1:1, 2:1, 3:1, 4:1)	(available 1:1, 2:1, 3:1, 4:1)	(available 1:1, 2:1, 3:1, 4:1)	(available 1:1, 2:1, 3:1, 4:1)	(available 1:1, 2:1, 3:1, 4:1)
	SOLVENT PUMP	N/A	45:1 Merkur	45:1 Merkur	45:1 Merkur	45:1 Merkur
	JUNCTION BOX	N/A	N/A	Included	N/A	Included
	HEATED HOSE	N/A	N/A	N/A	Water Jacketed	Water Jacketed
	RATIO ASSURANCE	N/A	N/A	N/A	PressureTrak	PressureTrak
	GUN	XTR+	XTR+	XTR+	XTR+	XTR+
	HOSE	3/8 in x 25 ft (9.5 x 7.5 m) Xtreme Duty Airless Hose 1/4 in x 10 ft (6.4 mm x 3 m) Xtreme Duty Whip Hose	3/8 in x 25 ft (9.5 x 7.5 m) Xtreme Duty Airless Hose 1/4 in x 10 ft (6.4 mm x 3 m) Xtreme Duty Whip Hose	3/8 in x 25 ft (9.5 x 7.5 m) Xtreme Duty Airless Hose 1/4 in x 10 ft (6.4 mm x 3 m) Xtreme Duty Whip Hose	3/8 in x 25 ft (9.5 x 7.5 m) Xtreme Duty Airless Hose 1/4 in x 10 ft (6.4 mm x 3 m) Xtreme Duty Whip Hose	3/8 in x 25 ft (9.5 x 7.5 m) Xtreme Duty Airless Hose 1/4 in x 10 ft (6.4 mm x 3 m) Xtreme Duty Whip Hose
	APPROVALS	Haz-Loc Approved	Haz-Loc Approved	Ordinary Location	Haz-Loc Approved	Ordinary Location

*Viscon HP 240V heaters standard on XP-50 and XP-70. Viscon HF 240V heaters standard on XP50-hf and XP70-hf.



		XP50S-HF			XP70S-HF	
SPECIFICATIONS	FRAME	Skid			Skid	
	MOTOR SIZE (CC)	XL 10000			XL 10000	
	MAX FLUID PRESSURE (BAR)	5000 (345)			7250 (500)	
	GPM (LPM) AT 40 CPM (APPROXIMATE)	4 (15.1)			3 (11.4)	
	HOPPERS	25 gal SST Heated with Agitator and Monark Feed Pumps			25 gal SST Heated with Agitator and Monark Feed Pumps	
	CONFIGURATION	VOLTAGE	NON-HAZARDOUS LOCATION	HAZARDOUS LOCATION COMPONENTS	NON-HAZARDOUS LOCATION	HAZARDOUS LOCATION COMPONENTS
MODEL	ELECTRIC HEATED HOSE	240V	578103 – 1:1	578113 – 1:1	577103 – 1:1	577113 – 1:1
			578203 – 2:1	578213 – 2:1	577203 – 2:1	577213 – 2:1
			578303 – 3:1	578313 – 3:1	577303 – 3:1	577313 – 3:1
			578403 – 4:1	578413 – 4:1	577403 – 4:1	577413 – 4:1
		480V	578123 – 1:1	578133 – 1:1	577123 – 1:1	577133 – 1:1
			578223 – 2:1	578233 – 2:1	577223 – 2:1	577233 – 2:1
			578323 – 3:1	578333 – 3:1	577323 – 3:1	577333 – 3:1
			578423 – 4:1	578433 – 4:1	577423 – 4:1	577431 – 4:1
	WATER JACKETED HOSE	240V	578101 – 1:1	578111 – 1:1	577101 – 1:1	577111 – 1:1
			578201 – 2:1	578211 – 2:1	577201 – 2:1	577211 – 2:1
			578301 – 3:1	578311 – 3:1	577301 – 3:1	577311 – 3:1
			578401 – 4:1	578411 – 4:1	577401 – 4:1	577411 – 4:1
	480V	578121 – 1:1	578131 – 1:1	577121 – 1:1	577131 – 1:1	
		578221 – 2:1	578231 – 2:1	577221 – 2:1	577231 – 2:1	
		578321 – 3:1	578331 – 3:1	577321 – 3:1	577331 – 3:1	
		578421 – 4:1	578431 – 4:1	577421 – 4:1	577431 – 4:1	

INCLUDES	MODEL	ELECTRIC HEATED HOSE: xxxx03	ELECTRIC HEATED HOSE: xxxx23	WATER JACKETED HOSE: xxxx01	WATER JACKETED HOSE: xxxx21
	MIX MANIFOLD	Remote Carriage Included	Remote Carriage Included	Remote Carriage Included	Remote Carriage Included
	PRIMARY HEATER	Viscon HF 240V	Viscon HF 480V	Viscon HF 240V	Viscon HF 480V
	RATIO – FIXED	(available 1:1, 2:1, 3:1, 4:1)	(available 1:1, 2:1, 3:1, 4:1)	(available 1:1, 2:1, 3:1, 4:1)	(available 1:1, 2:1, 3:1, 4:1)
	SOLVENT PUMP	45:1 Merkur	45:1 Merkur	45:1 Merkur	45:1 Merkur
	JUNCTION BOX	Included	Included	Included	Included
	HEATED HOSE	Electric Controller	Electric Controller	Water Jacketed	Water Jacketed
	GUN	XTR+	XTR+	XTR+	XTR+
	HOSE	3/8 in x 25 ft (9.5 x 7.5 m)	3/8 in x 25 ft (9.5 x 7.5 m)	3/8 in x 25 ft (9.5 x 7.5 m)	3/8 in x 25 ft (9.5 x 7.5 m)
		Xtreme Duty Airless Hose 1/4 in x 10 ft (6.4 mm x 3 m)	Xtreme Duty Airless Hose 1/4 in x 10 ft (6.4 mm x 3 m)	Xtreme Duty Airless Hose 1/4 in x 10 ft (6.4 mm x 3 m)	Xtreme Duty Airless Hose 1/4 in x 10 ft (6.4 mm x 3 m)
		Xtreme Duty Whip Hose	Xtreme Duty Whip Hose	Xtreme Duty Whip Hose	Xtreme Duty Whip Hose
	APPROVALS	Ordinary Location	Ordinary Location	Ordinary Location	Ordinary Location

INCLUDES	MODEL	ELECTRIC HEATED HOSE: xxxx13	ELECTRIC HEATED HOSE: xxxx33	WATER JACKETED HOSE: xxxx11	WATER JACKETED HOSE: xxxx31
	MIX MANIFOLD	Remote Carriage Included	Remote Carriage Included	Remote Carriage Included	Remote Carriage Included
	PRIMARY HEATER	Viscon HF 240V	Viscon HF 480V	Viscon HF 240V	Viscon HF 480V
	RATIO – FIXED	(available 1:1, 2:1, 3:1, 4:1)	(available 1:1, 2:1, 3:1, 4:1)	(available 1:1, 2:1, 3:1, 4:1)	(available 1:1, 2:1, 3:1, 4:1)
	SOLVENT PUMP	45:1 Merkur	45:1 Merkur	45:1 Merkur	45:1 Merkur
	JUNCTION BOX	Included	Included	Included	Included
	HEATED HOSE	Electric Controller	Electric Controller	Water Jacketed	Water Jacketed
	GUN	XTR+	XTR+	XTR+	XTR+
	HOSE	3/8 in x 25 ft (9.5 x 7.5 m)	3/8 in x 25 ft (9.5 x 7.5 m)	3/8 in x 25 ft (9.5 x 7.5 m)	3/8 in x 25 ft (9.5 x 7.5 m)
		Xtreme Duty Airless Hose 1/4 in x 10 ft (6.4 mm x 3 m)	Xtreme Duty Airless Hose 1/4 in x 10 ft (6.4 mm x 3 m)	Xtreme Duty Airless Hose 1/4 in x 10 ft (6.4 mm x 3 m)	Xtreme Duty Airless Hose 1/4 in x 10 ft (6.4 mm x 3 m)
		Xtreme Duty Whip Hose	Xtreme Duty Whip Hose	Xtreme Duty Whip Hose	Xtreme Duty Whip Hose
	APPROVALS	Haz-Loc Approved	Haz-Loc Approved	Haz-Loc Approved	Haz-Loc Approved



		E-MIX	
SPECIFICATIONS	FRAME	Cart	
	MAX FLUID PRESSURE (BAR)	5000 (345)	
	MAXIMUM GPM (LPM)	1.5 (5.7)	
	MIX RATIO RANGE	1:1 to 6:1 (in 0.01 increments)	
	VOLTAGE	240V / 40A	
	HOPPERS	7 Gallon Plastic	
	APPROVALS	Ordinary Location	
	SERIES TYPE	STANDARD XT	PRO XT
	PART NUMBER	2004087	2005565
	GUN	XTR5+	XTR5+
INCLUDES	HOSE	3/8 in x 25 ft (9.5 x 7.5 m)	3/8 in x 25 ft (9.5 x 7.5 m)
		Xtreme Duty Airless Hose	Xtreme Duty Airless Hose
		1/4 in x 10 ft (6.4 mm x 3 m)	1/4 in x 10 ft (6.4 mm x 3 m)
		Xtreme Duty Whip Hose	Xtreme Duty Whip Hose
	FLUSH PUMP	FastClean	FastClean
	PRIMARY HEATER	DualFlo On-Demand	DualFlo On-Demand
	RATIO ASSURANCE	RatioGuard	RatioGuard
	RATIO CHECK	Included	Included
	PUMP TYPE	Endurance with ProConnect	Endurance with ProConnect
	REMOTE MANIFOLD CARRIAGE	N/A	Included
	REMOTE MIX HOSES	N/A	200 ft x 1/2 in (4 x 50 ft) "A" and "B" Material Hose
			100 ft x 3/8 in (2 x 50 ft) "B" Material Hose (ratios over 3:1)
			100 ft x 1/4 in (2 x 50 ft) Solvent Flush Hose
	HOSE RACK	N/A	Included



		XM50				XM70		
SPECIFICATIONS	FRAME	Skid				Skid		
	MOTOR SIZE (CC)	XL 6500				XL 6500		
	MAX FLUID PRESSURE (BAR)	5200 (358)				6300 (434)		
	MAXIMUM GPM (LPM)	3 (11.4)				3 (11.4)		
	MINIMUM GPM (LPM)	1 qt/min (0.95 lpm)				1 qt/min (0.95 lpm)		
	MIX RATIO RANGE	1:1 to 10:1 (in 0.01 increments)				1:1 to 10:1 (in 0.01 increments)		
MODEL	CONFIGURATION	VOLTAGE	NON-HAZARDOUS LOCATION	HAZARDOUS LOCATION COMPONENTS	HAZARDOUS LOCATION APPROVED	NON-HAZARDOUS LOCATION	HAZARDOUS LOCATION COMPONENTS	HAZARDOUS LOCATION APPROVED
	Bare				XM5N00			XM7N00
	With Primary Heaters	240V			XM5E00			XM7E00
	Electric Heated Hose	240V	XM5M0E	XM5J0E		XM7M0E	XM7J0E	
		480V	XM5H0E	XM5K0E		XM7H0E	XM7K0E	
	Water Jacketed Hose	240V	XM5M0W	XM5J0W		XM7M0W	XM7J0W	
		480V	XM5H0W	XM5K0W		XM7H0W	XM7K0W	
	Electric Heated Hose and 25 Gallon Heated Hoppers	240V	XM5M2E	XM5J2E		XM7M2E	XM7J2E	
		480V	XM5H2E	XM5K2E		XM7H2E	XM7K2E	
	Water Jacketed Hose and 25 Gallon Heated Hoppers	240V	XM5M2W	XM5J2W		XM7M2W	XM7J2W	
		480V	XM5H2W	XM5K2W		XM7H2W	XM7K2W	

INCLUDES	MODEL	BARE: xxxN00	W/PRIMARY HEATERS: xxxE00	ELECTRIC HEATED HOSE: xxxJ0E	WATER JACKETED HOSE: xxxJ0W	W/25 GALLON HOPPERS: xxxJ2E	W/25 GALLON HOPPERS: xxxJ2W
	MIX MANIFOLD	Remote Carriage Included	Remote Carriage Included	Remote Carriage Included	Remote Carriage Included	Remote Carriage Included	Remote Carriage Included
	PRIMARY HEATER	N/A	Viscon HP	Viscon HF	Viscon HF	Viscon HF	Viscon HF
	SOLVENT PUMP	30:1 Merkur	30:1 Merkur	30:1 Merkur	30:1 Merkur	30:1 Merkur	30:1 Merkur
	JUNCTION BOX	Included	Included	Included	Included	Included	Included
	HEATED HOSE	N/A	N/A	Electric Controller	Water Jacketed	Electric Controller	Water Jacketed
	GUN	XTR+	XTR+	XTR+	XTR+	XTR+	XTR+
	HOSE	3/8 in x 25 ft (9.5 x 7.5 m)	3/8 in x 25 ft (9.5 x 7.5 m)	3/8 in x 25 ft (9.5 x 7.5 m)	3/8 in x 25 ft (9.5 x 7.5 m)	3/8 in x 25 ft (9.5 x 7.5 m)	3/8 in x 25 ft (9.5 x 7.5 m)
		Xtreme Duty Airless Hose 1/4 in x 10 ft (6.4 mm x 3 m)	Xtreme Duty Airless Hose 1/4 in x 10 ft (6.4 mm x 3 m)	Xtreme Duty Airless Hose 1/4 in x 10 ft (6.4 mm x 3 m)	Xtreme Duty Airless Hose 1/4 in x 10 ft (6.4 mm x 3 m)	Xtreme Duty Airless Hose 1/4 in x 10 ft (6.4 mm x 3 m)	Xtreme Duty Airless Hose 1/4 in x 10 ft (6.4 mm x 3 m)
		Xtreme Duty Whip Hose	Xtreme Duty Whip Hose	Xtreme Duty Whip Hose	Xtreme Duty Whip Hose	Xtreme Duty Whip Hose	Xtreme Duty Whip Hose
	APPROVALS	Haz-Loc Approved	Haz-Loc Approved	Haz-Loc Components	Haz-Loc Components	Haz-Loc Components	Haz-Loc Components

INCLUDES	MODEL	ELECTRIC HEATED HOSE: xxxM0E	WATER JACKETED HOSE: xxxH0W	W/25 GALLON HOPPERS: xxxM2E	W/25 GALLON HOPPERS: xxxH2W
	MIX MANIFOLD	Remote Carriage Included	Remote Carriage Included	Remote Carriage Included	Remote Carriage Included
	PRIMARY HEATER	Viscon HF	Viscon HF	Viscon HF	Viscon HF
	SOLVENT PUMP	30:1 Merkur	30:1 Merkur	30:1 Merkur	30:1 Merkur
	JUNCTION BOX	Included	Included	Included	Included
	HEATED HOSE	Electric Controller	Water Jacketed	Electric Controller	Water Jacketed
	GUN	XTR+	XTR+	XTR+	XTR+
	HOSE	3/8 in x 25 ft (9.5 x 7.5 m)	3/8 in x 25 ft (9.5 x 7.5 m)	3/8 in x 25 ft (9.5 x 7.5 m)	3/8 in x 25 ft (9.5 x 7.5 m)
		Xtreme Duty Airless Hose 1/4 in x 10 ft (6.4 mm x 3 m)	Xtreme Duty Airless Hose 1/4 in x 10 ft (6.4 mm x 3 m)	Xtreme Duty Airless Hose 1/4 in x 10 ft (6.4 mm x 3 m)	Xtreme Duty Airless Hose 1/4 in x 10 ft (6.4 mm x 3 m)
	APPROVALS	Ordinary Location	Ordinary Location	Ordinary Location	Ordinary Location



SPRAY WITH CONFIDENCE

Industry-Leading Warranty Protection

Every Graco electric is backed by the industry's best warranty coverage.

WARRANTY

Graco warrants all equipment manufactured by Graco and bearing its name to be free from defects in material and workmanship on the date of sale by an authorized Graco distributor to the original purchaser for use. With the exception of any special, extended, or limited warranty published by Graco, Graco will, for a period of twelve (12) months from the date of sale, repair or replace any part of the equipment determined by Graco to be defective. This warranty applies only when the equipment is installed, operated and maintained in accordance with Graco's written recommendations.

This warranty does not cover, and Graco shall not be liable for general wear and tear, or any malfunction, damage, or wear caused by faulty installation, misapplication, abrasion, corrosion, inadequate or improper maintenance, negligence, accident, tampering, or substitution of non-Graco component parts. Nor shall Graco be liable for malfunction, damage or wear caused by the incompatibility of Graco equipment with structures, accessories, equipment or materials not supplied by Graco, or the improper design, manufacture, installation, operation or maintenance of structures, accessories, equipment or materials not supplied by Graco.



FINISH EVERY JOB, EVERY TIME

Downtime is costly. With the Endurance Advantage Program, you'll never need to worry about it again. Depending on the sprayer you purchase:

Receive up to 70% OFF the list price of an Endurance Pump

OR — Receive a FREE Repair Kit if you'd rather repack your own pump.

For more information visit graco.com/contractor